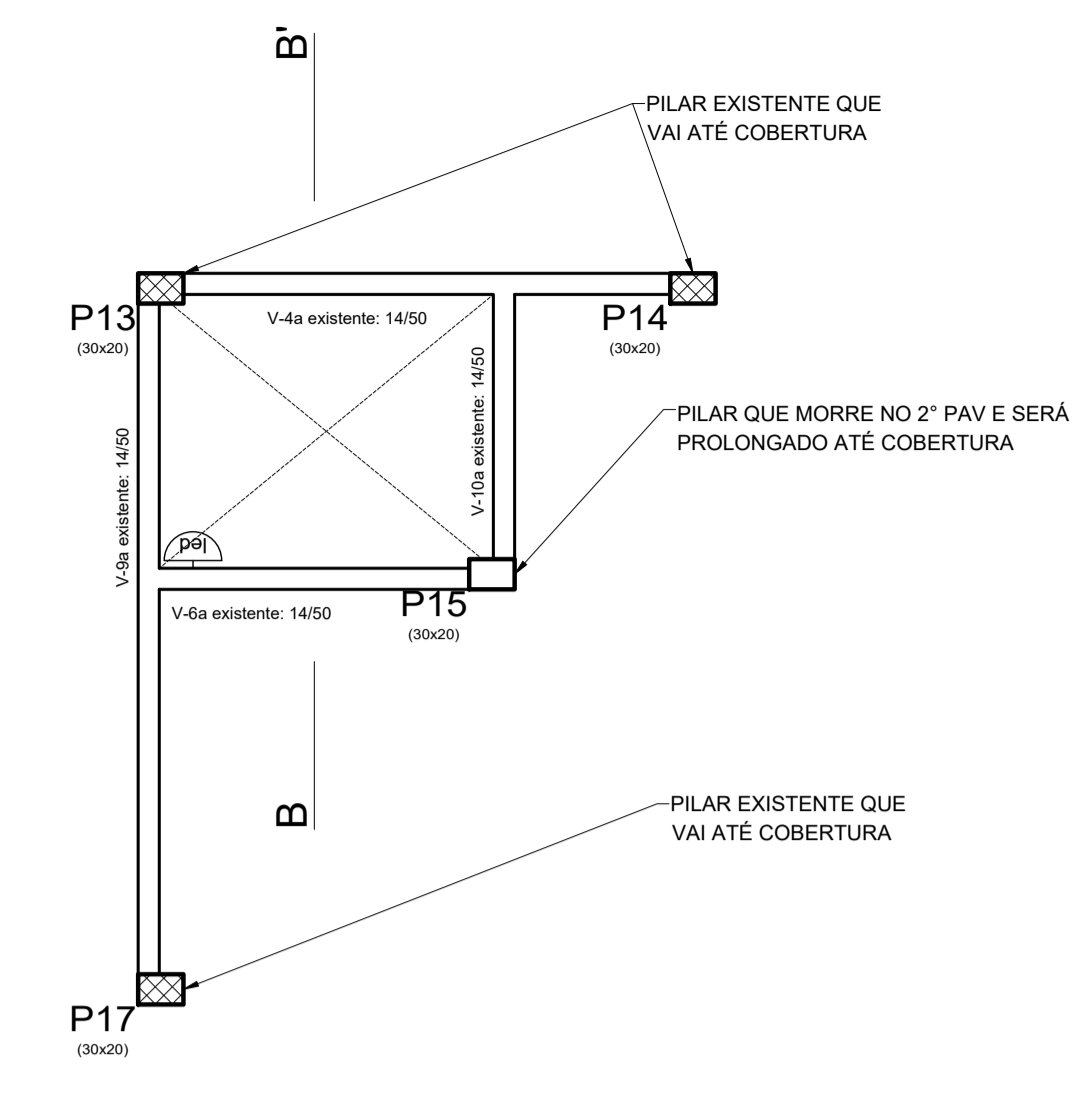
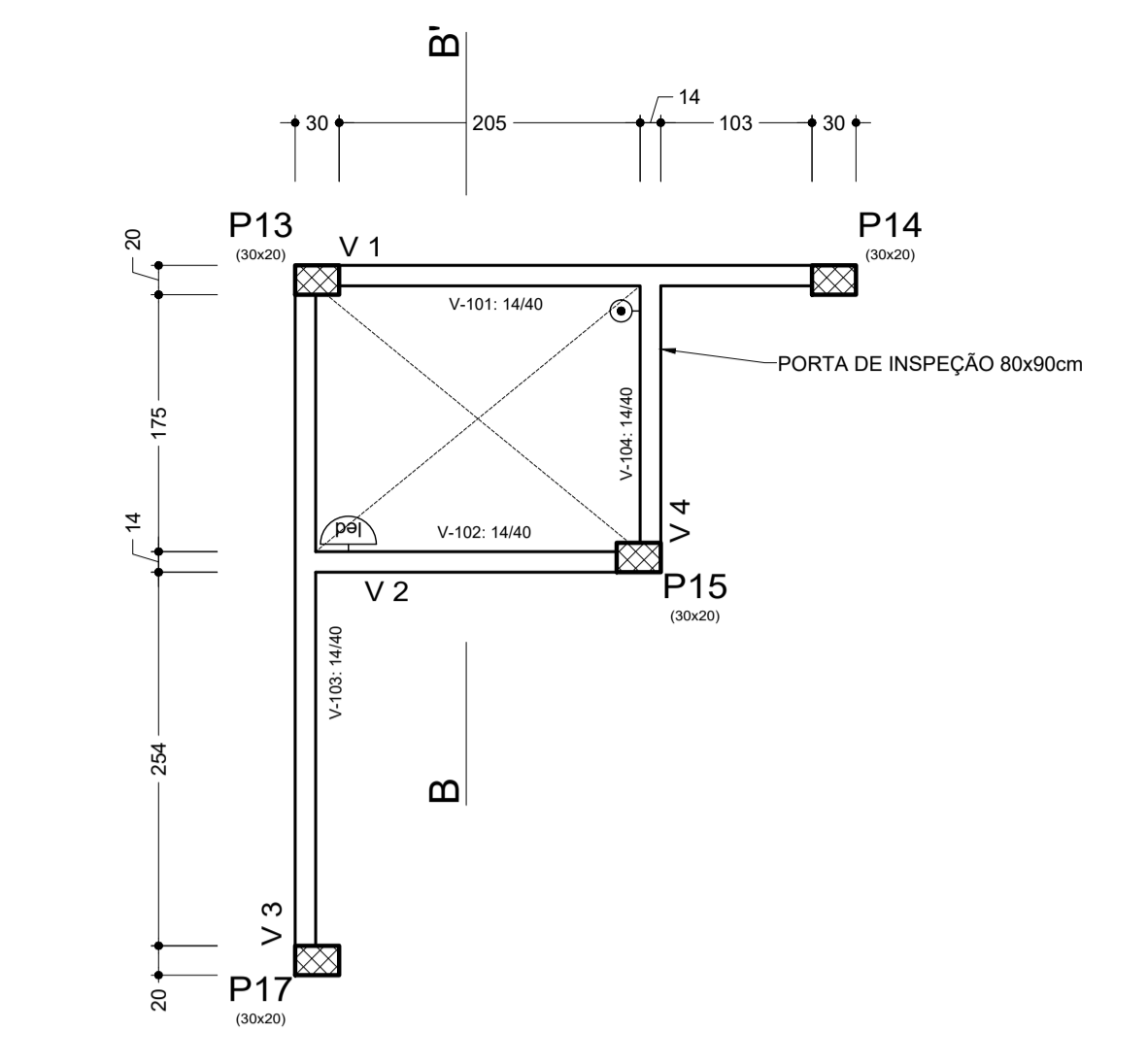


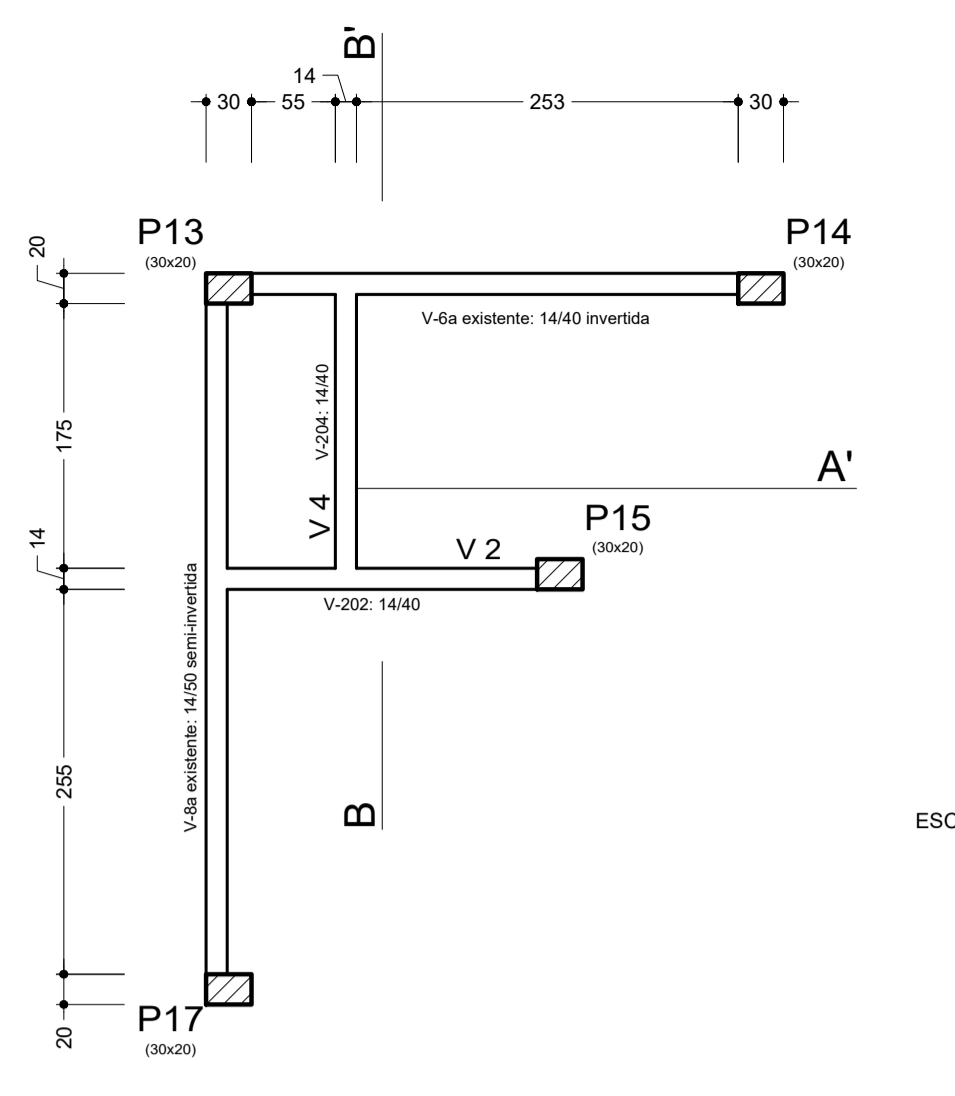
FORMAS FUNDO POÇO  
ESCALA 1:50



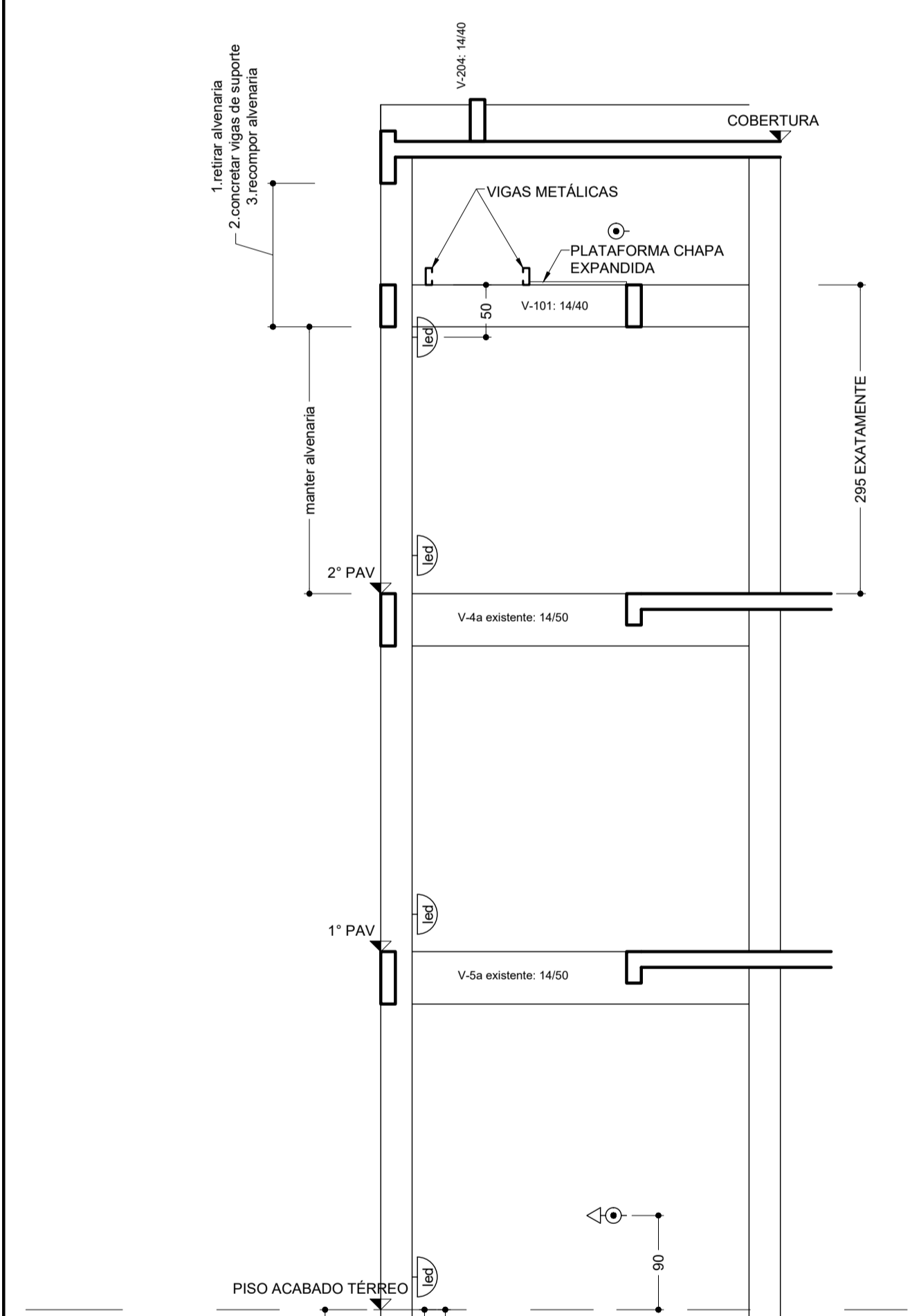
FORMAS 2º PAV  
ESCALA 1:50



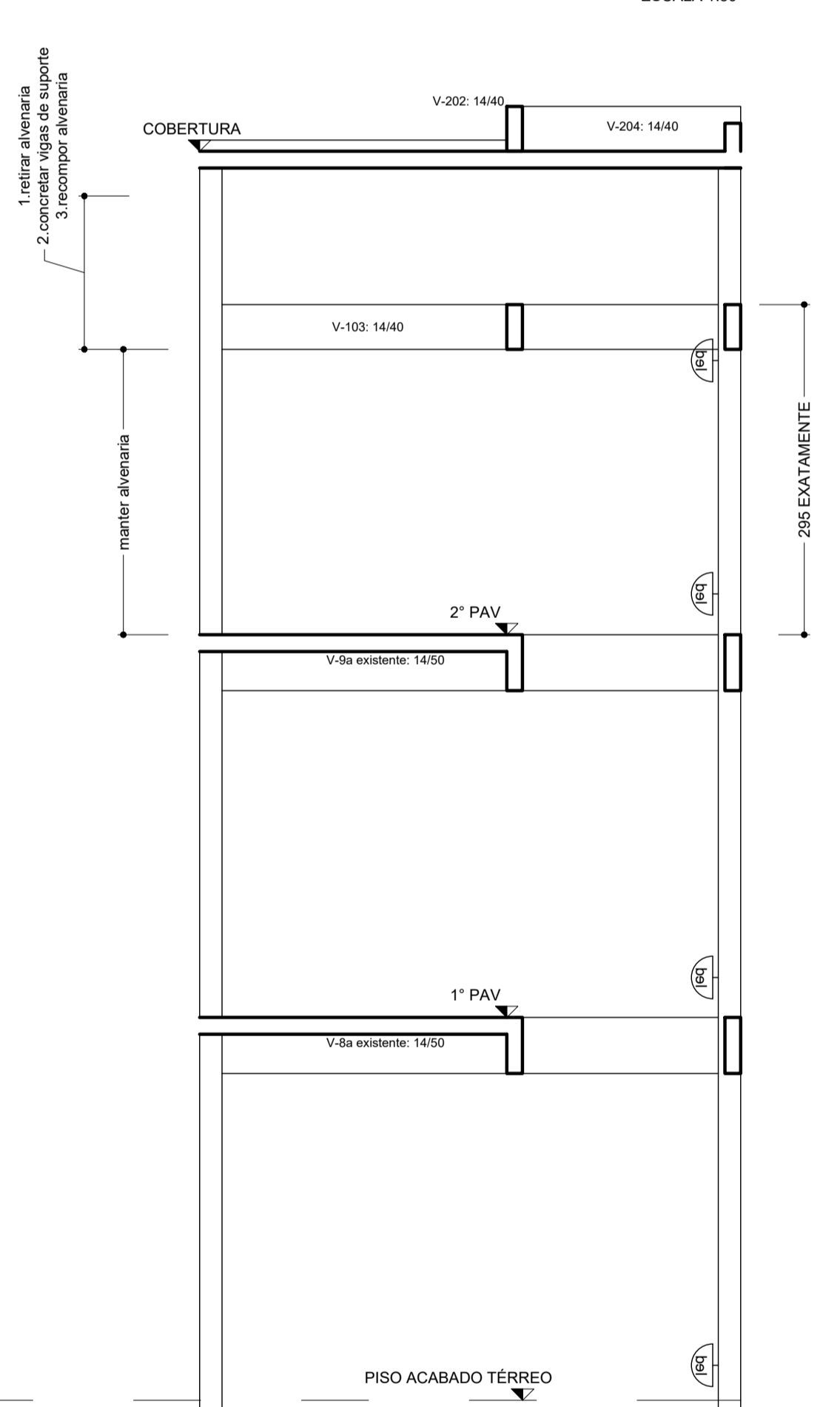
FORMAS CASA DE MÁQUINAS  
ESCALA 1:50



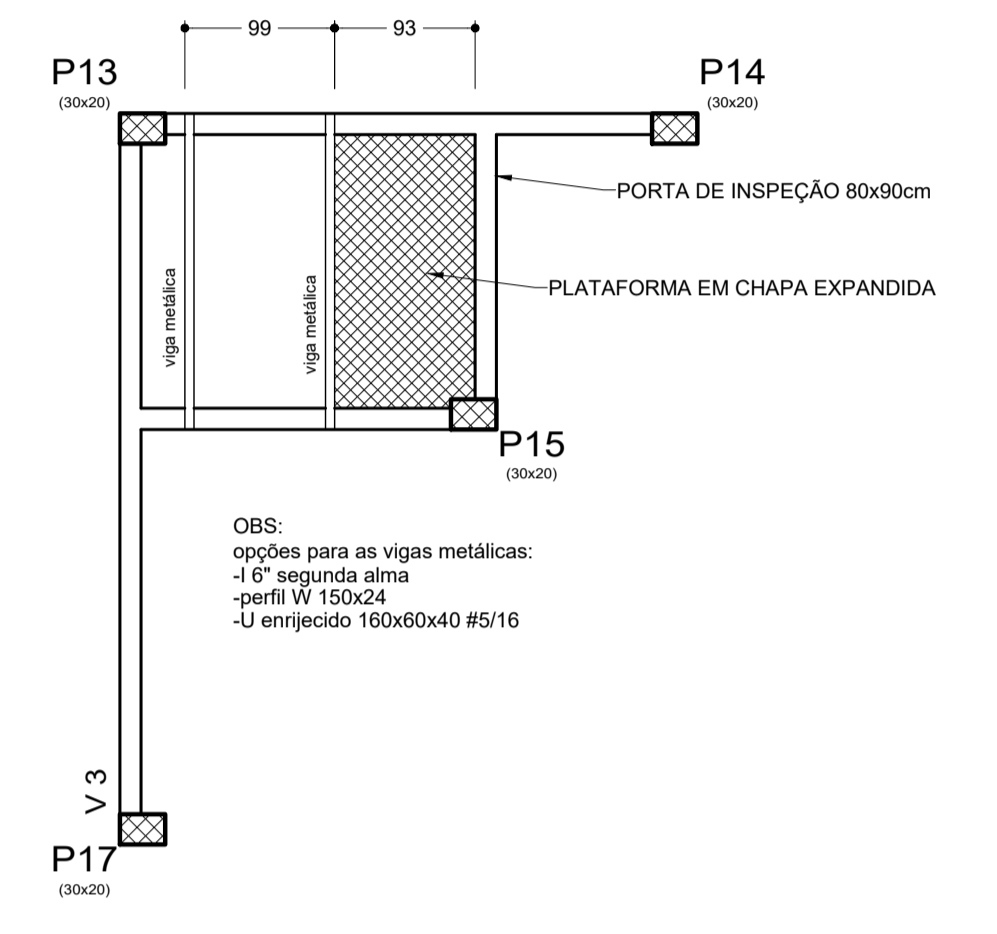
FORMAS COBERTURA  
ESCALA 1:50



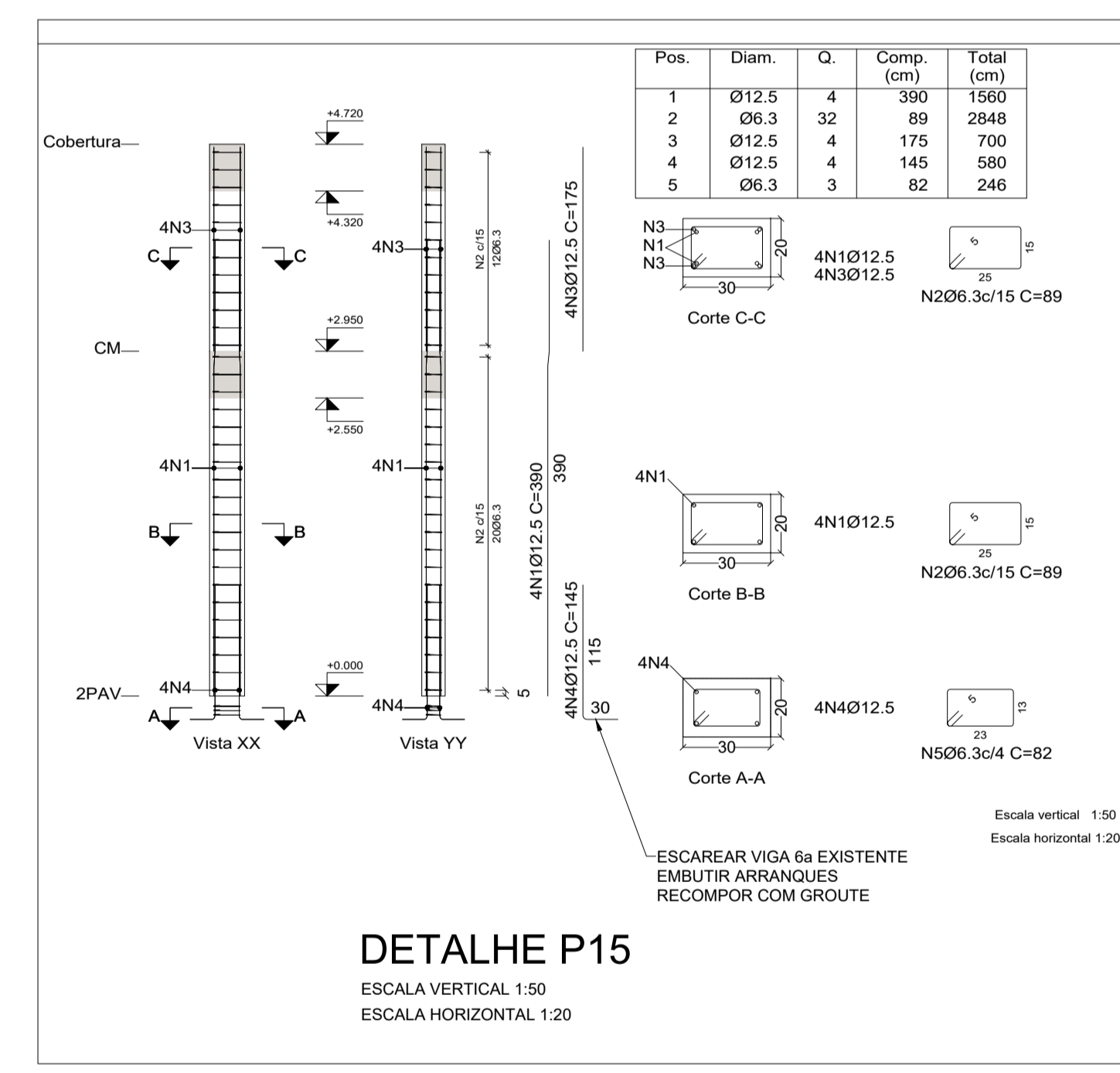
CORTE AA'  
ESCALA 1:50



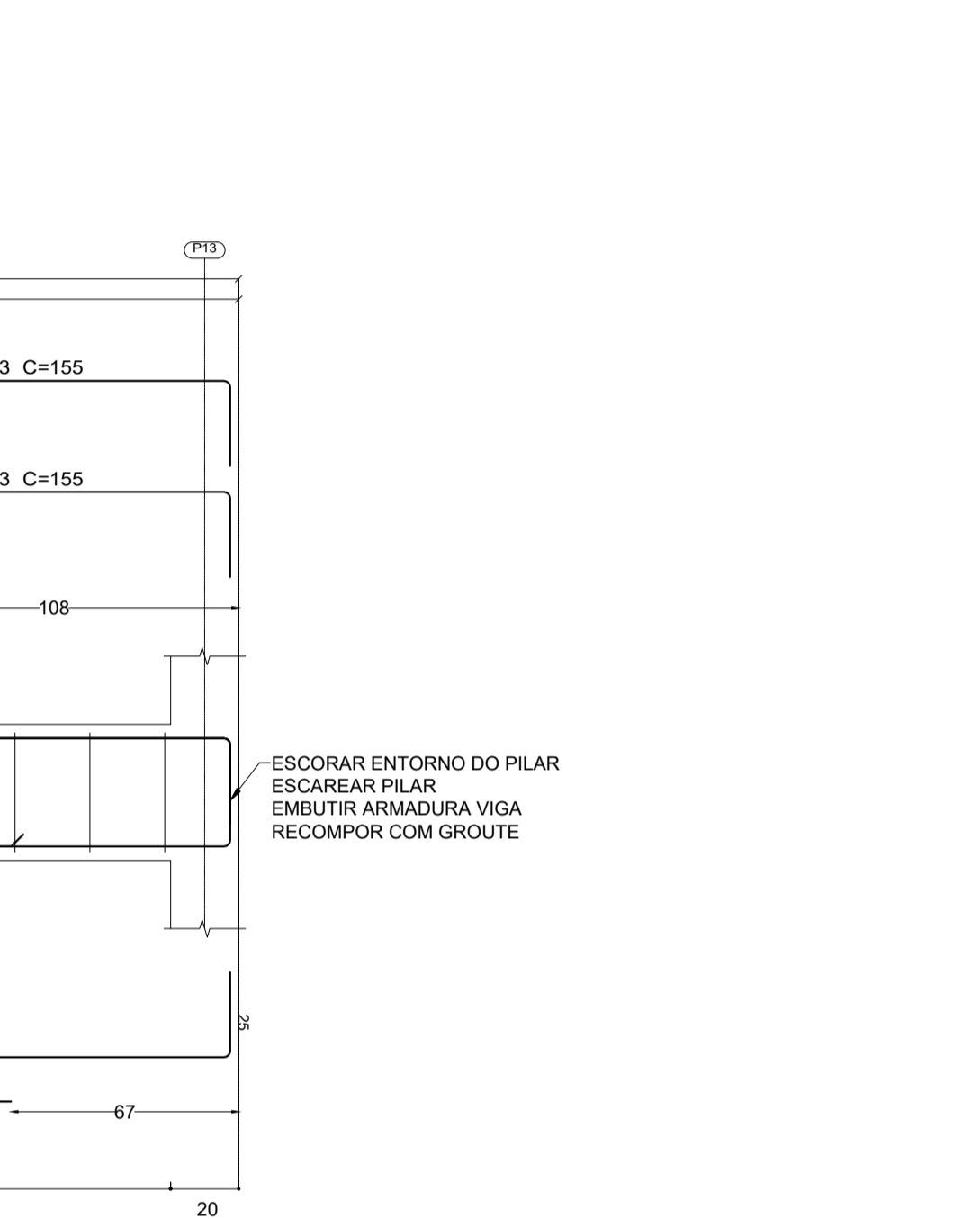
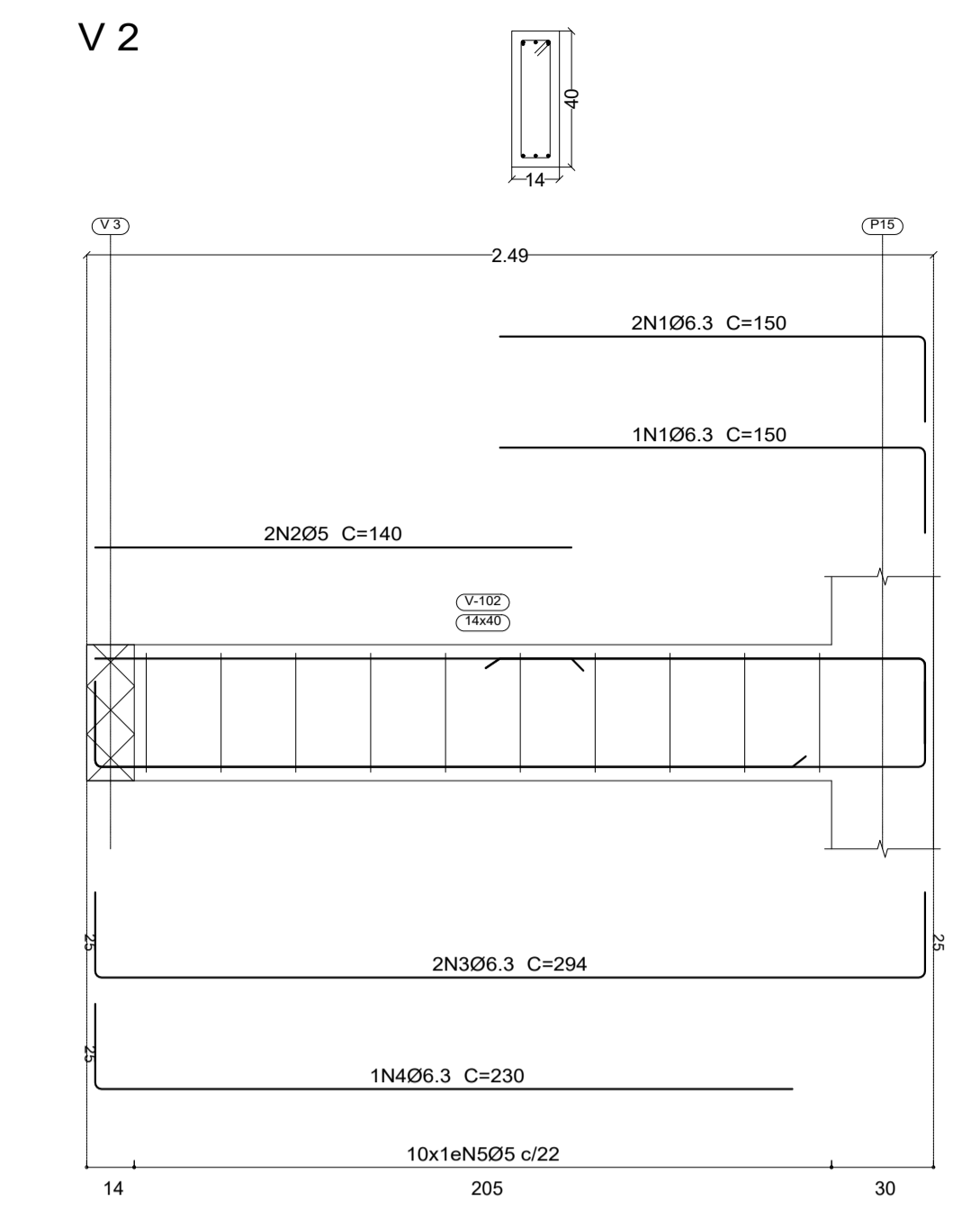
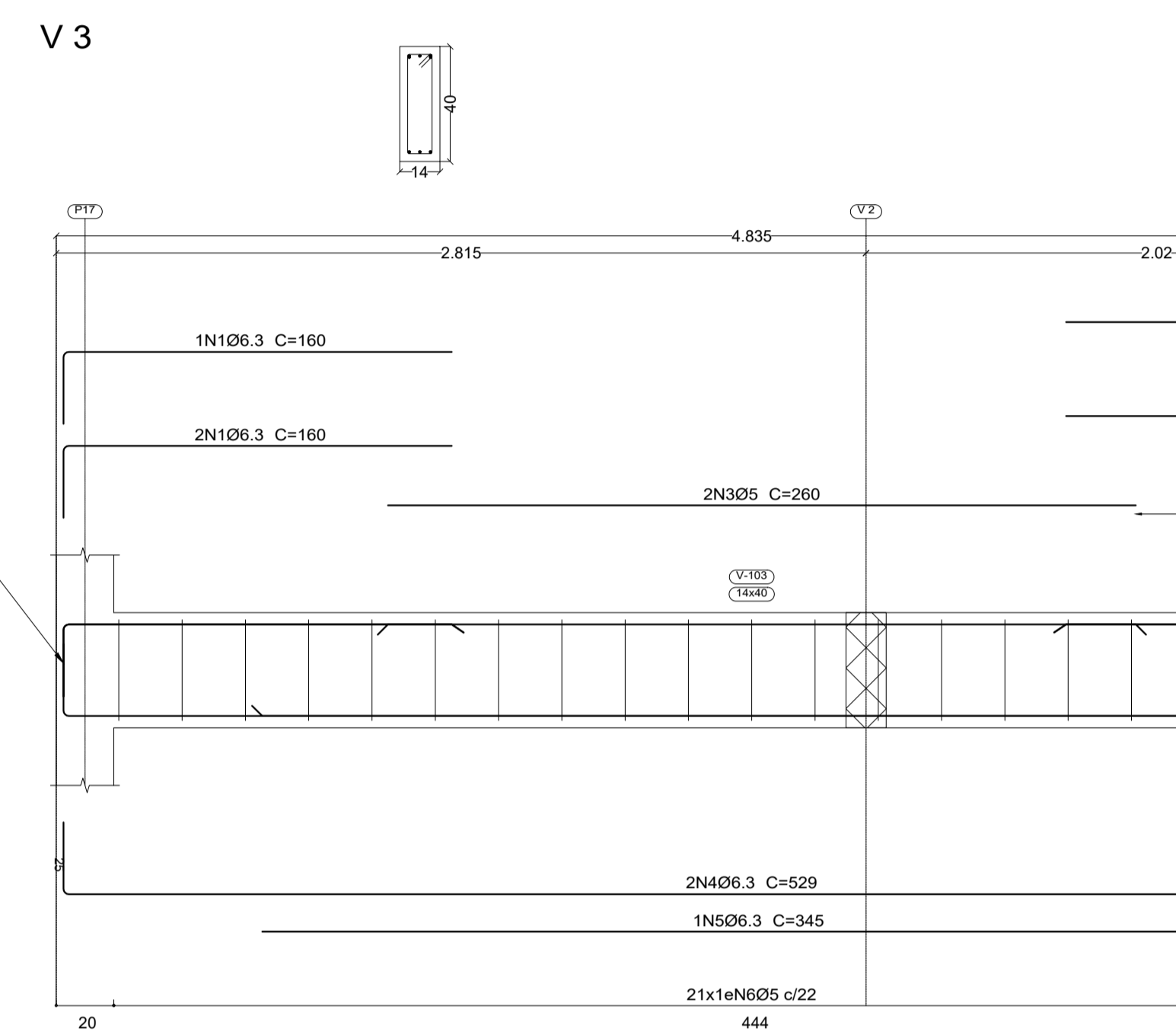
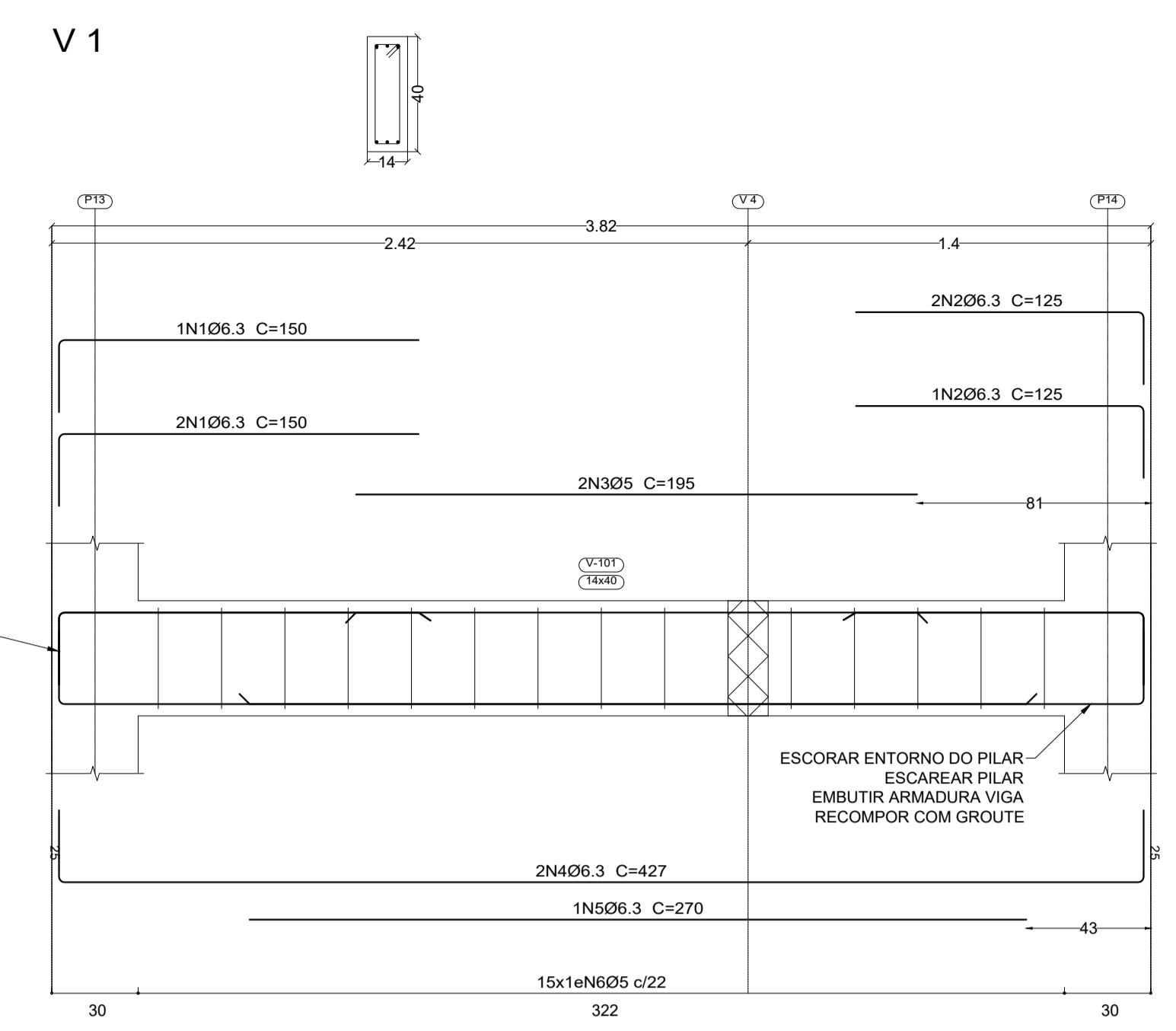
CORTE BB'  
ESCALA 1:50



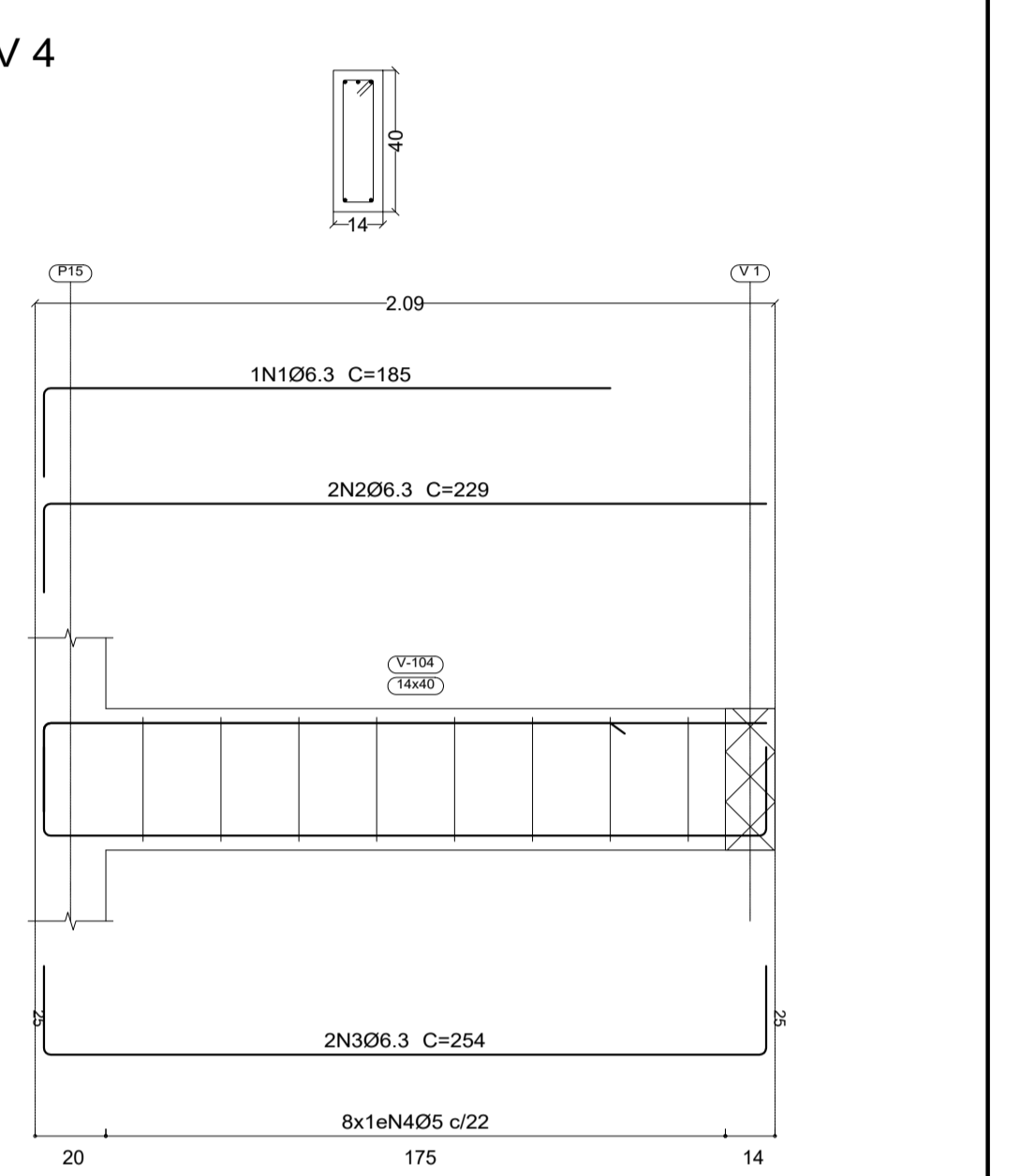
PLANTA CASA DE MÁQUINAS  
ESCALA 1:50



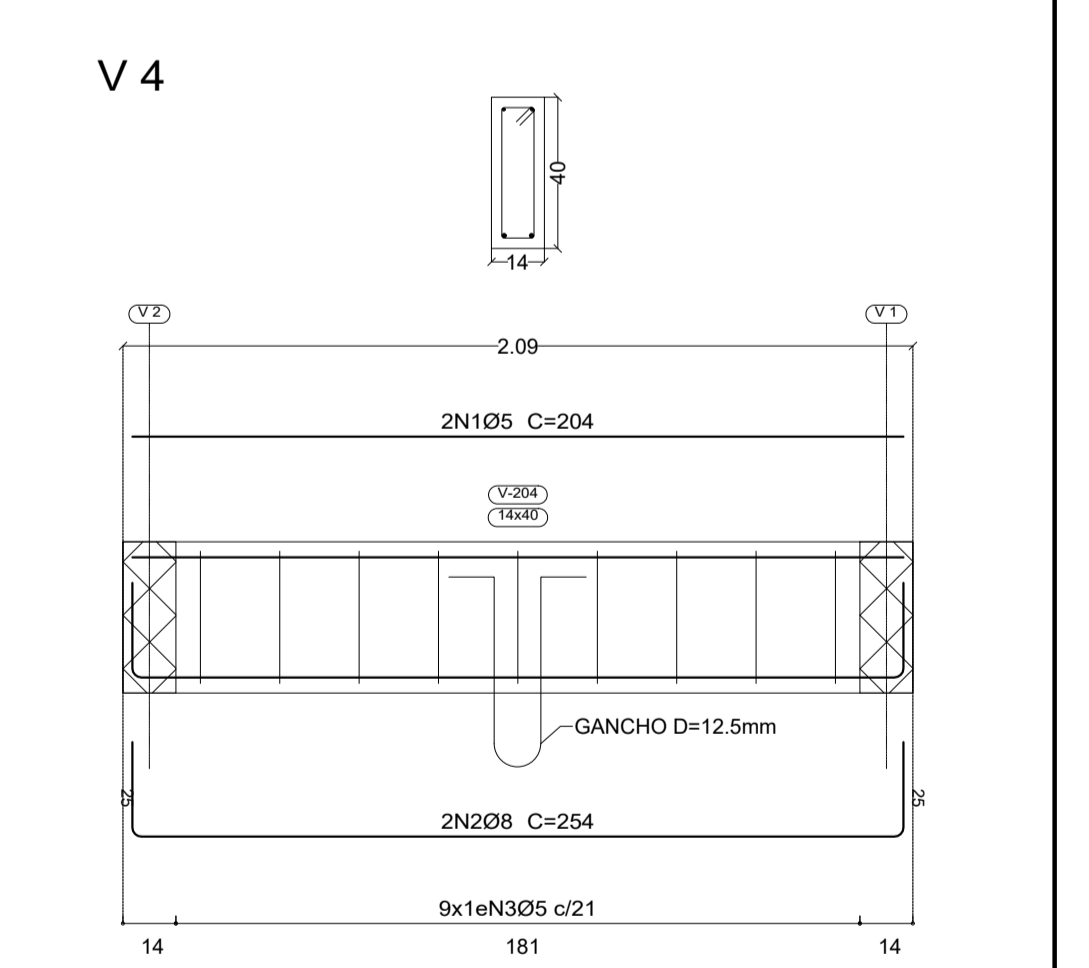
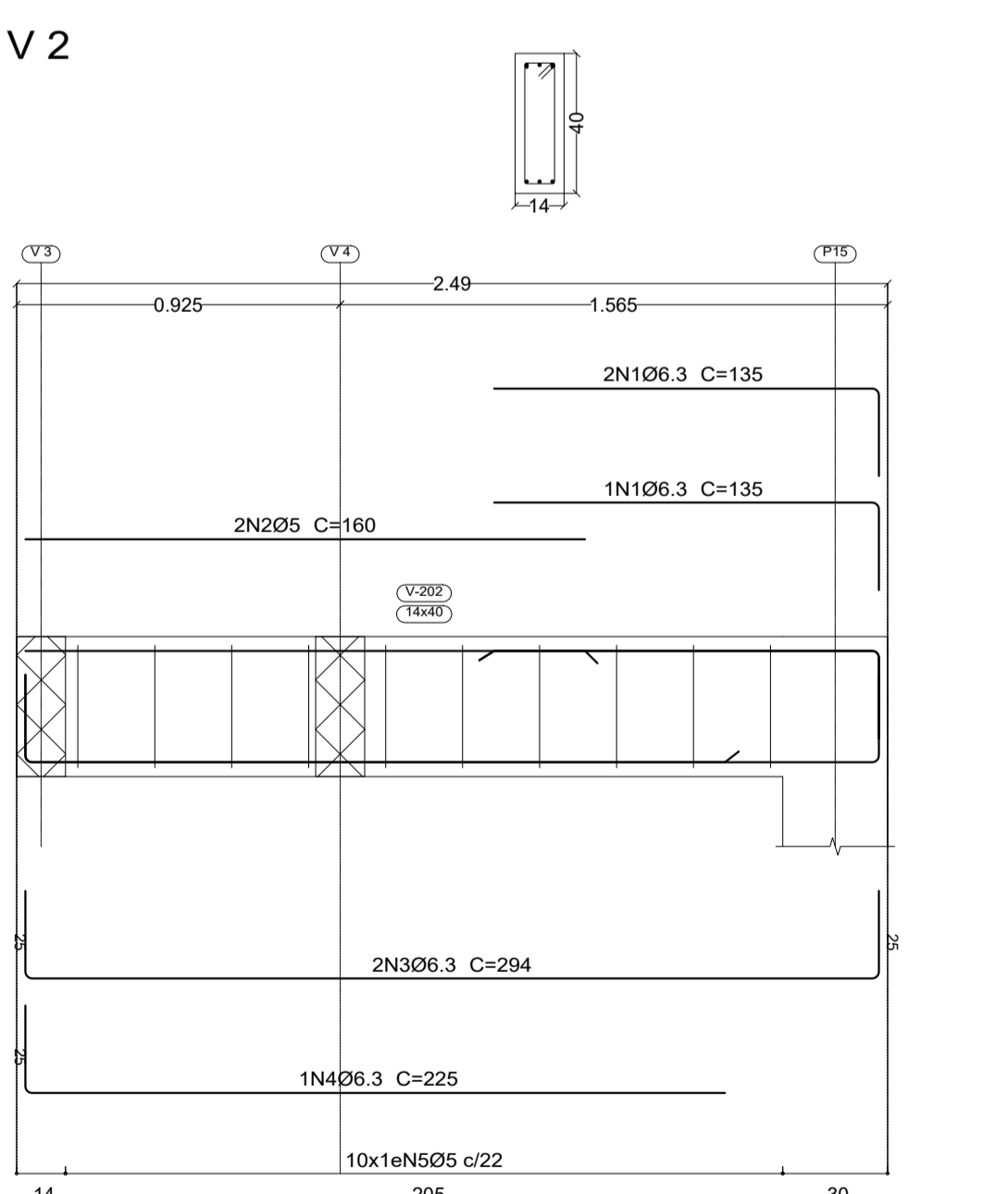
DETALHE P15  
ESCALA VERTICAL 1:50  
ESCALA HORIZONTAL 1:20



Elemento	Pos.	Diam.	Q.	Esquema (cm)	Comp. (cm)	Total (cm)	CA-50 (kg)	CA-60 (kg)
V1	1	Ø6.3	3	150	150	450	1.1	
	2	Ø6.3	3	125	125	375	0.9	
	3	Ø5	2	150	150	300		0.6
	4	Ø6.3	2	204	204	408	1.4	
	5	Ø6.3	1	270	270	270	0.7	
	6	Ø5	15	96	96	1440		2.3
Total=10%							5.3	3.2
V2	1	Ø6.3	3	150	150	450	1.1	
	2	Ø5	2	140	140	280		0.4
	3	Ø6.3	2	294	294	588	1.4	
	4	Ø6.3	1	230	230	230	0.6	
	5	Ø5	10	96	96	960		1.5
Total=10%							3.4	2.1
V3	1	Ø6.3	3	150	150	450	1.2	
	2	Ø6.3	3	155	155	465	1.1	
	3	Ø5	2	200	200	520		0.8
	4	Ø6.3	2	529	529	1058	2.6	
	5	Ø6.3	1	345	345	345	0.8	
6	Ø5	21	96	96	2016		3.2	
Total=10%							6.3	4.4
V4	1	Ø6.3	1	185	185	185	0.5	
	2	Ø6.3	2	229	229	458	1.1	
	3	Ø6.3	2	254	254	508	1.2	
	4	Ø5	6	96	96	768		1.2
Total=10%							3.1	1.3
							Ø6.3	11.0
							Ø6.3	18.1
							Total	11.0



Elemento	Pos.	Diam.	Q.	Esquema (cm)	Comp. (cm)	Total (cm)	CA-50 (kg)	CA-60 (kg)
V2	1	Ø6.3	3	135	135	405	1.0	
	2	Ø5	2	160	160	320		0.6
	3	Ø6.3	2	204	204	408	1.4	
	4	Ø6.3	1	225	225	225	0.6	
	5	Ø5	10	96	96	960		1.5
Total=10%							3.3	2.2
V4	1	Ø5	2	204	204	408		0.6
	2	Ø8	2	254	254	508	2.0	
	3	Ø5	9	96	96	864		1.4
Total=10%							2.2	2.2



- ARANDELA TIPO TARTARUGA COM LÂMPADA LED mínimo 15w
- INTERRUPTOR PARALELO
- TOMADA 3 PINOS 220V

CONVENÇÕES

- PILAR QUE NASCE
- PILAR QUE SEGUE
- PILAR QUE MORRE

CONCRETO FCK = 25 MPa

PROJETO EXECUTIVO DE REFORÇO E ADEQUAÇÃO DA CAIXA DE CORRIDA PRÉ-MOLDADA DO TELAR - CAMPUS DE CURITIBA II

Proj: Celso Henrique Breda  
CRB 24.160-07-PR

PROJETO ESTRUTURAL ADEQUAÇÃO POÇO ELEVADOR

01/01

Agosto 2021

Indicada

Rua dos Funcionários, 176 - bairro Cabral - Curitiba - PR