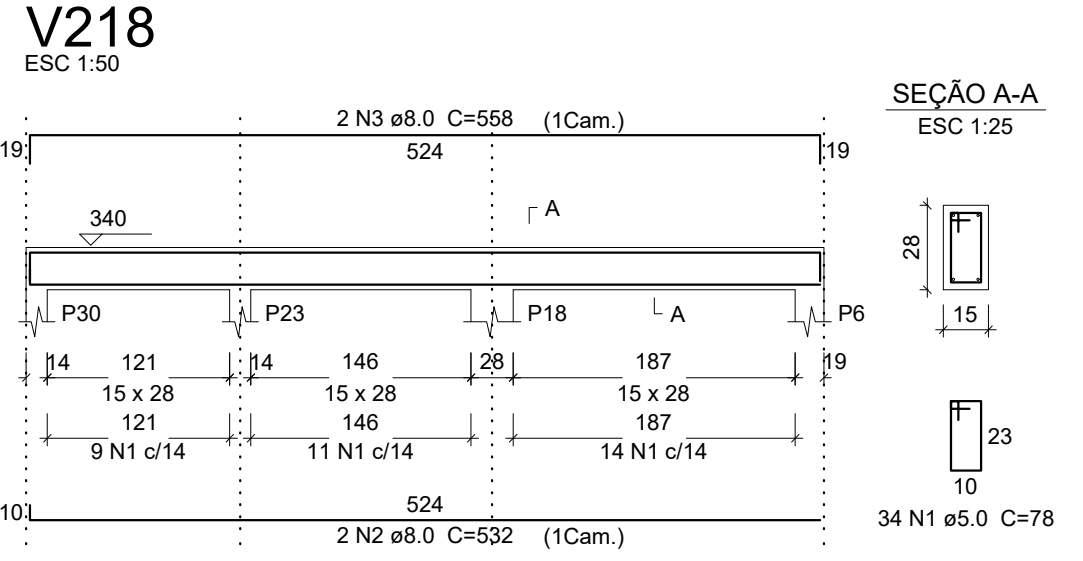
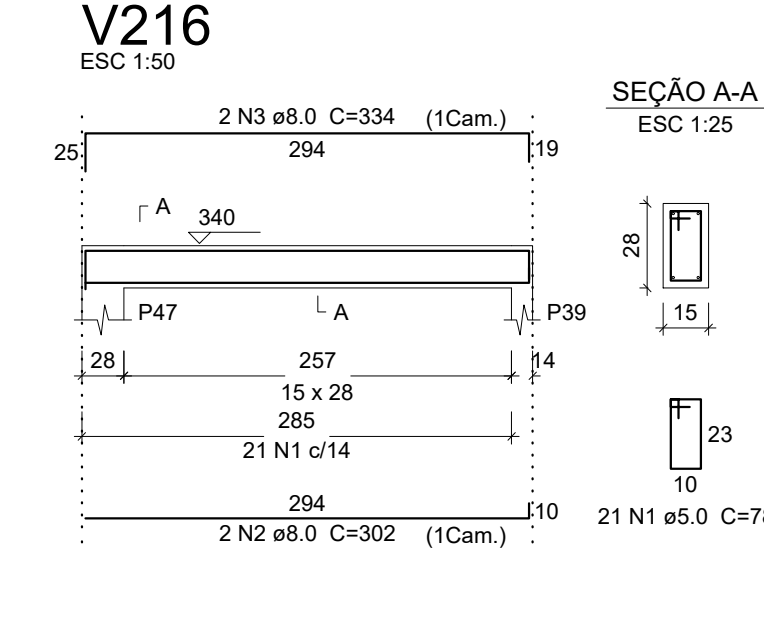
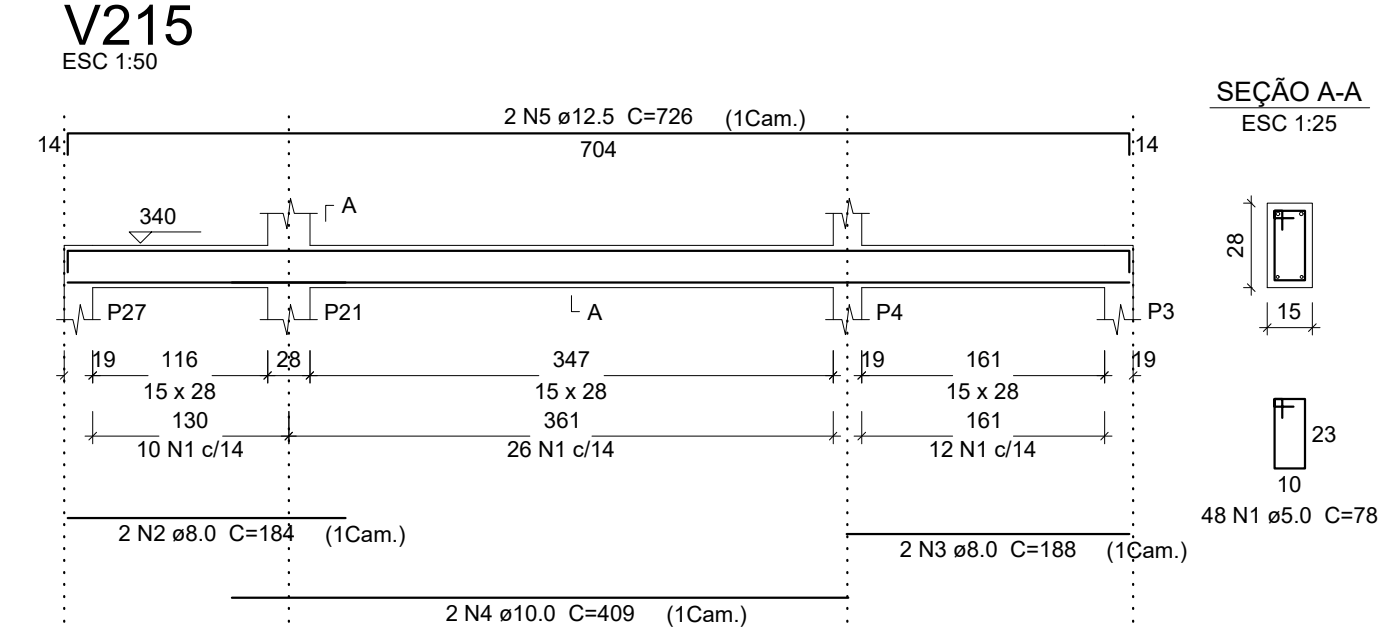
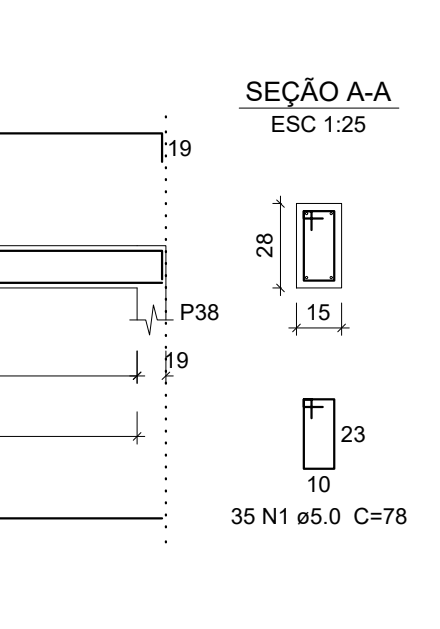
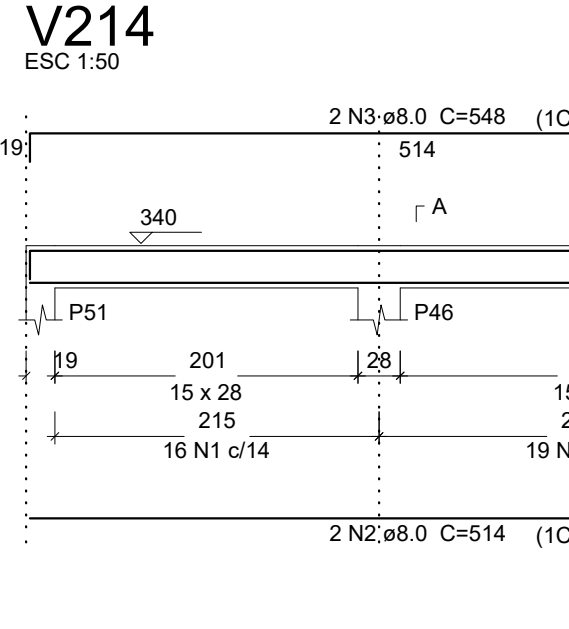
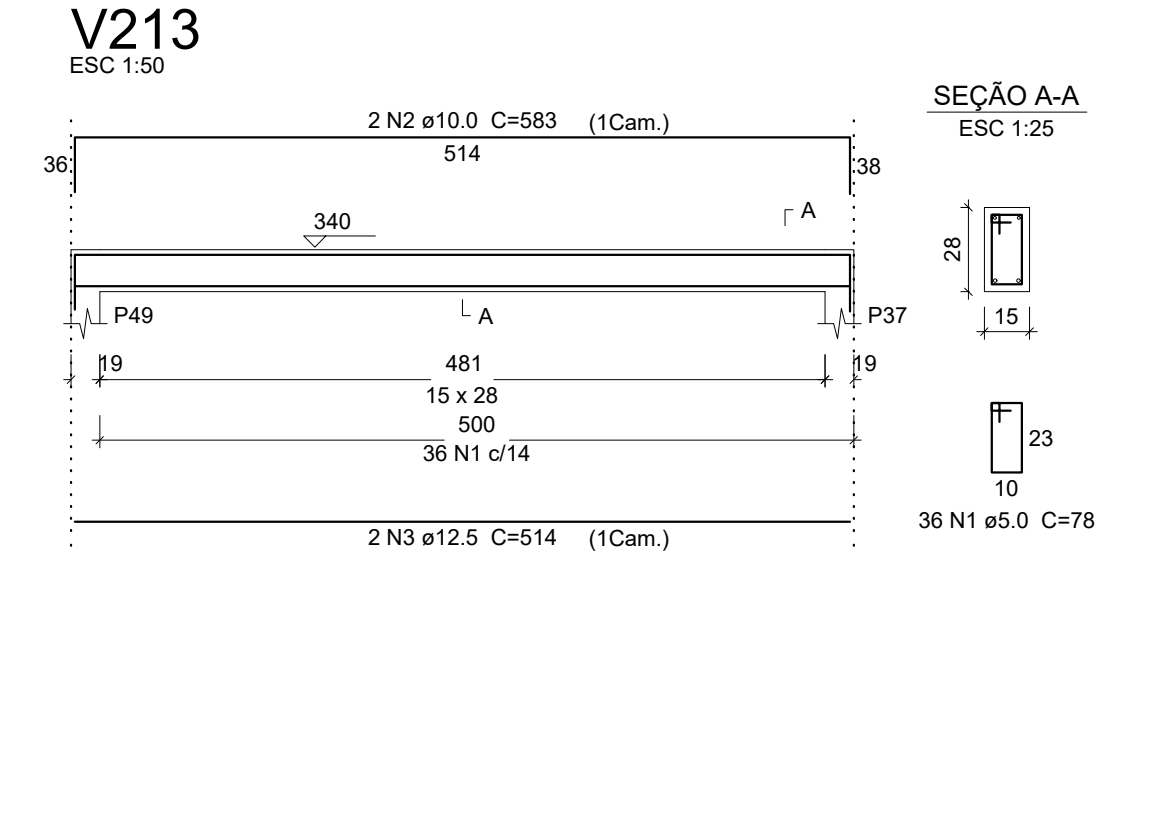
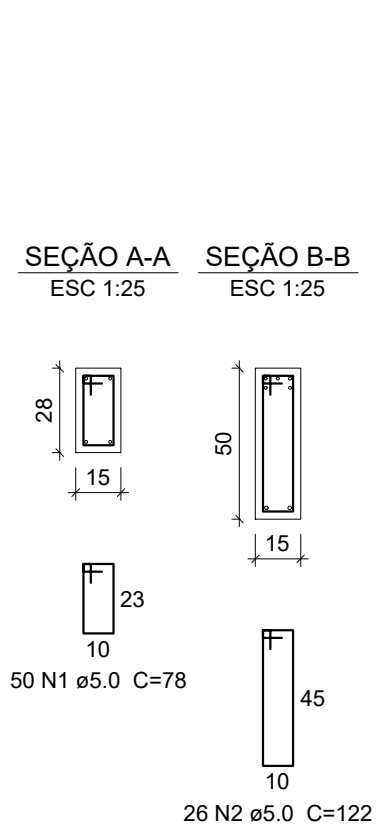
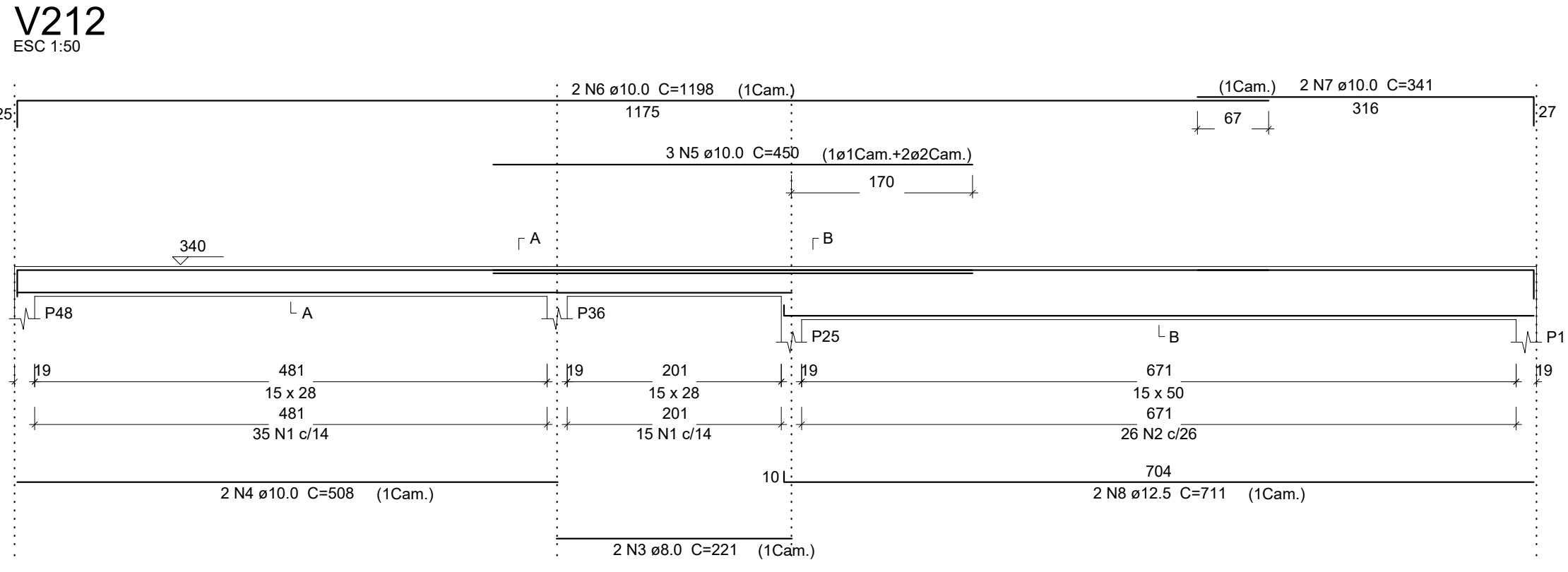
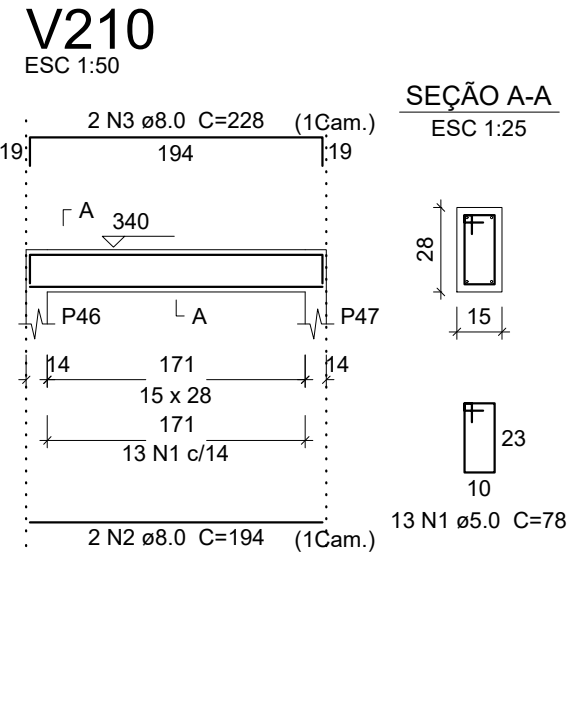
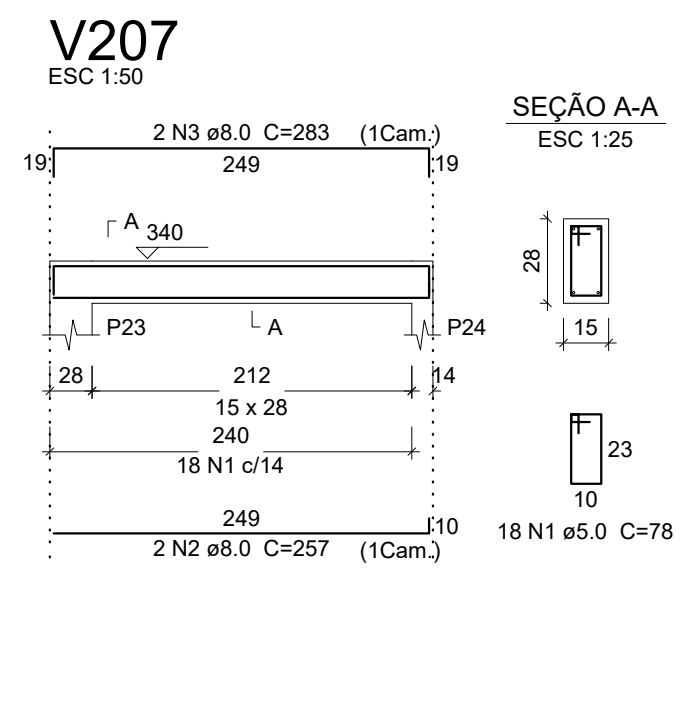
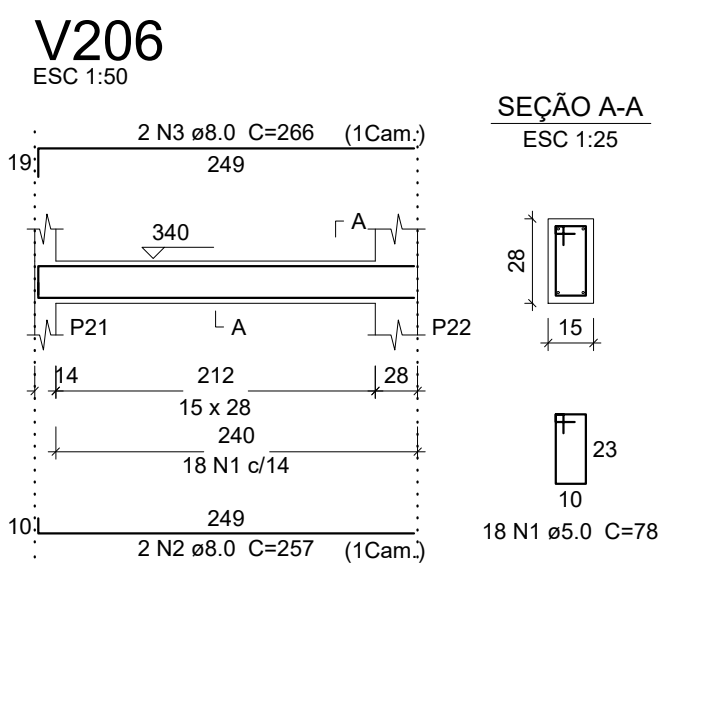
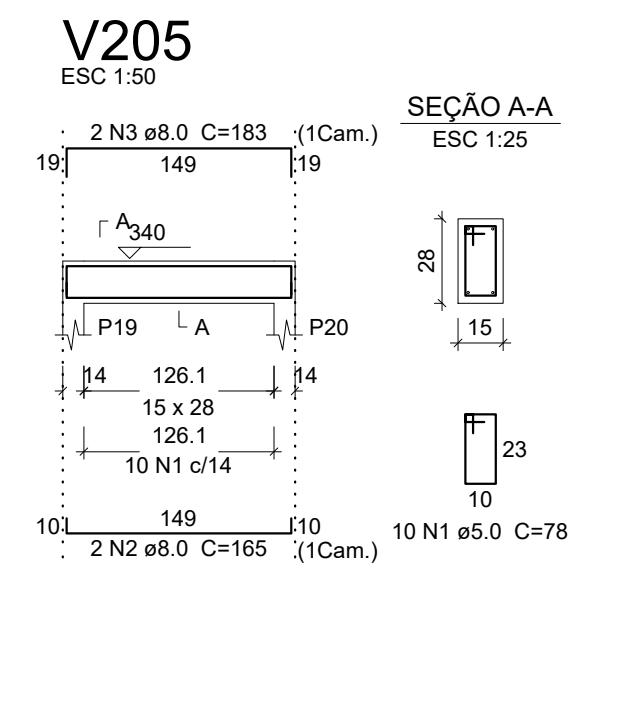
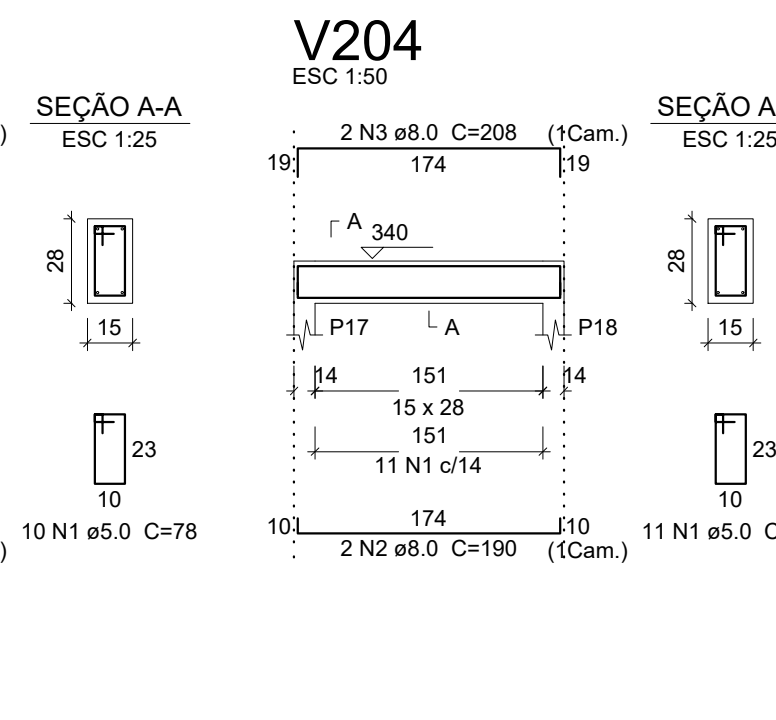
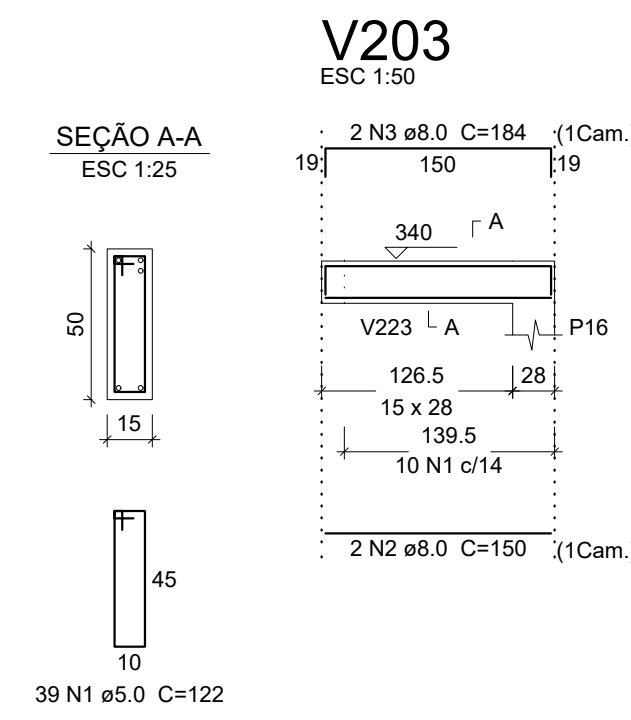
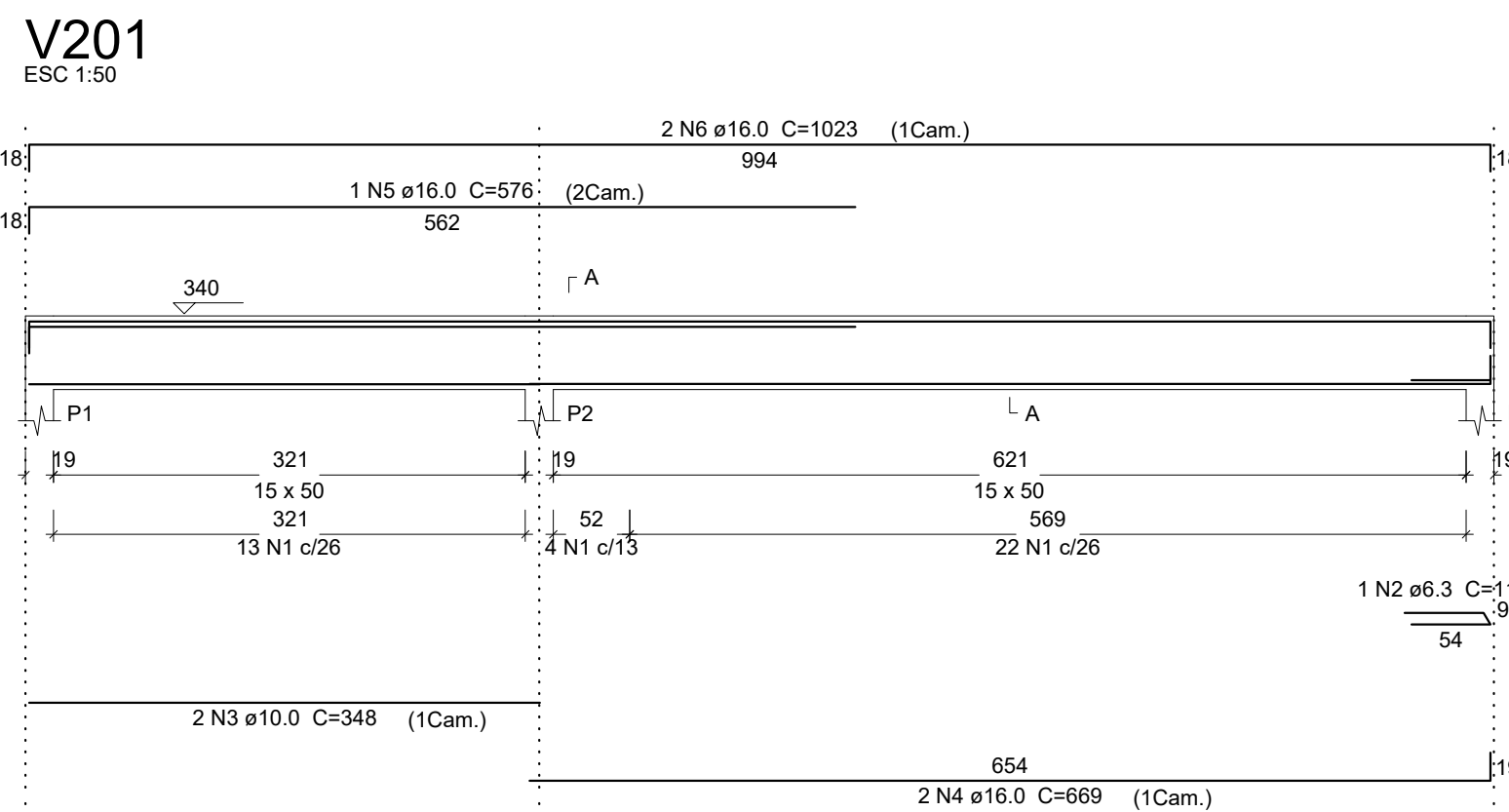
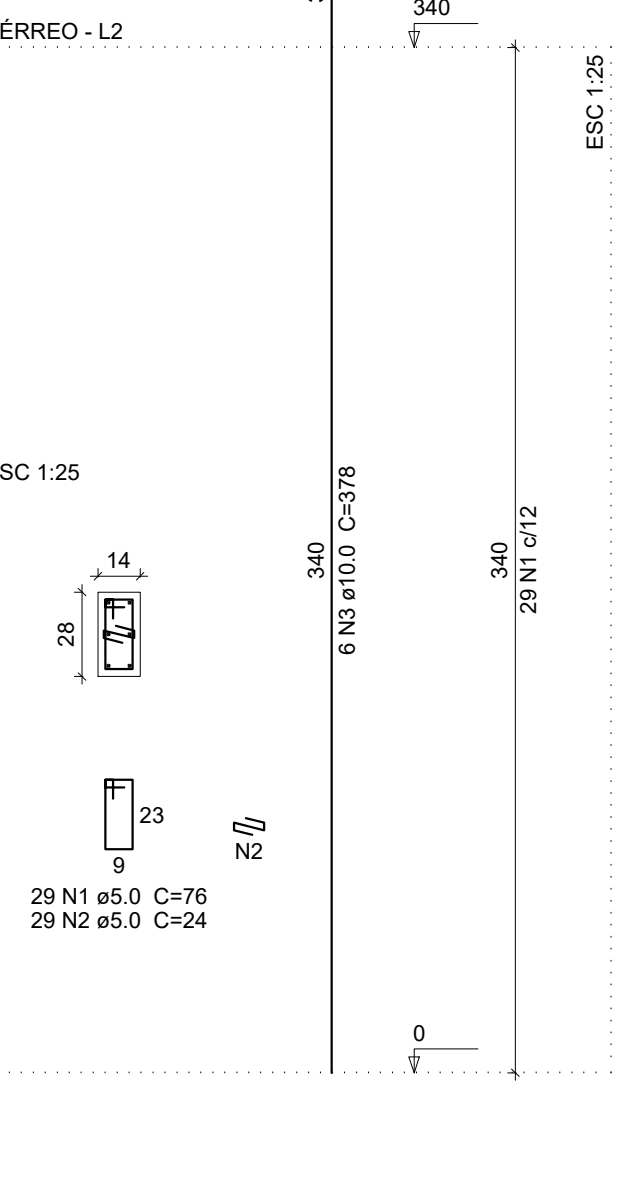
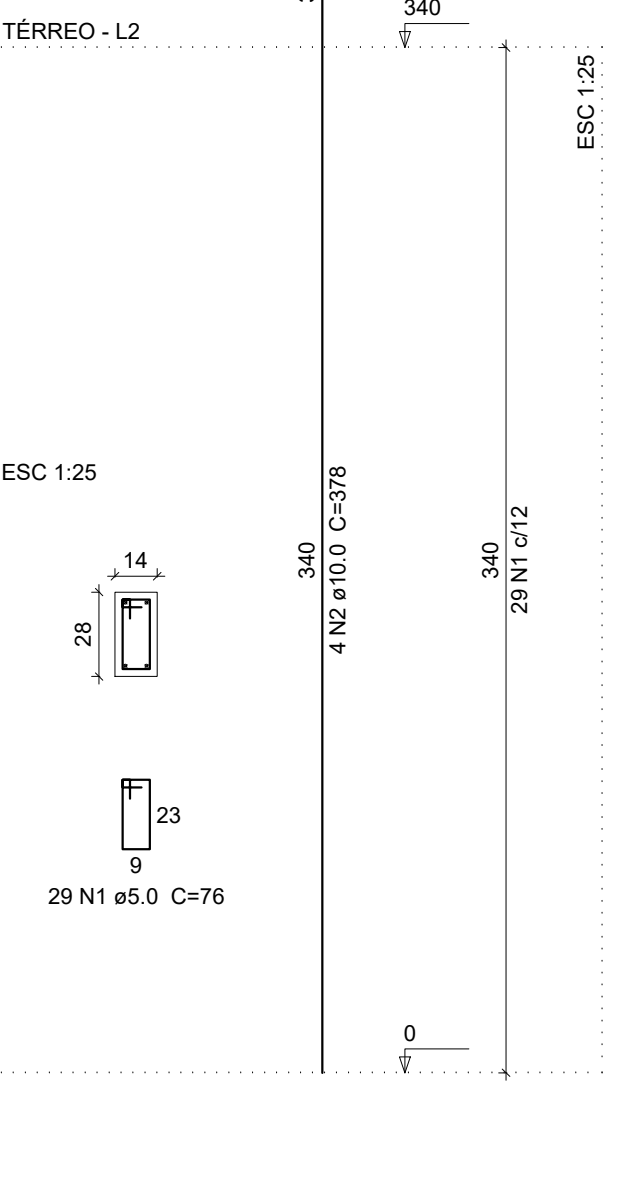
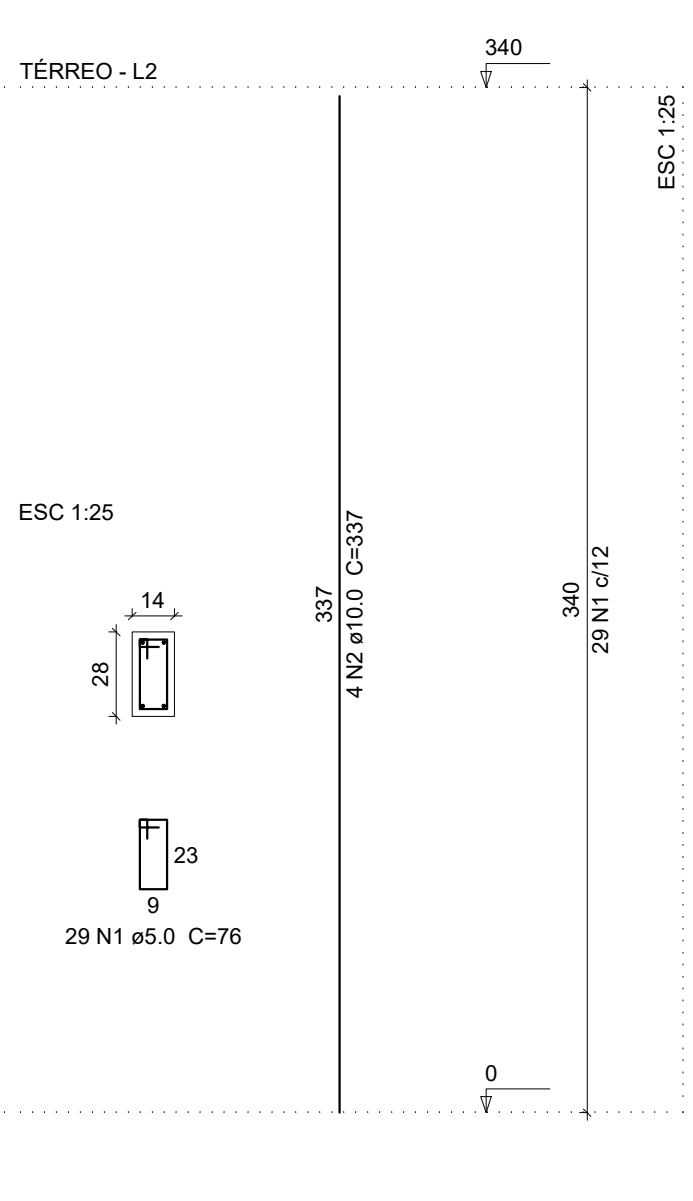
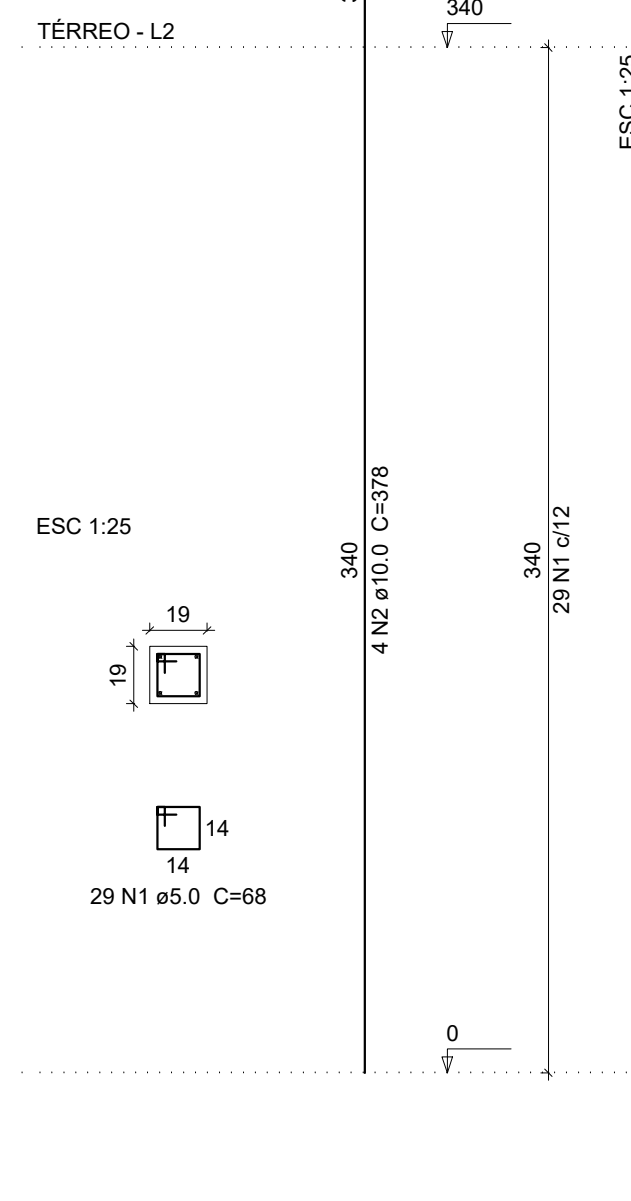
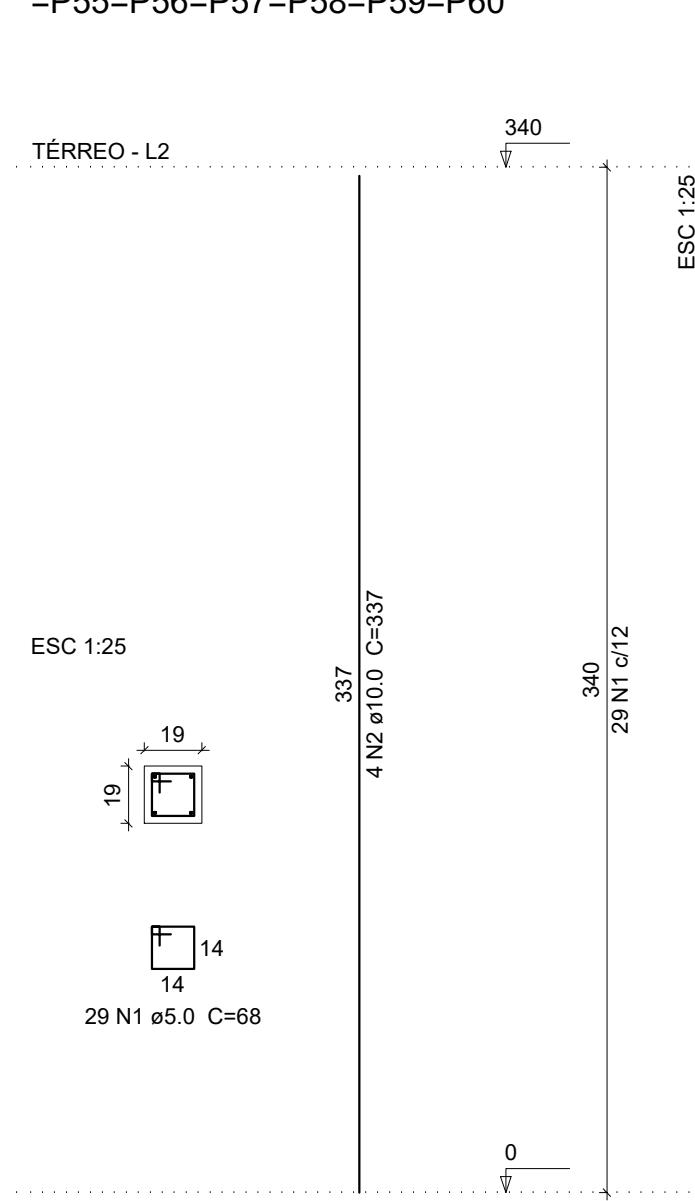
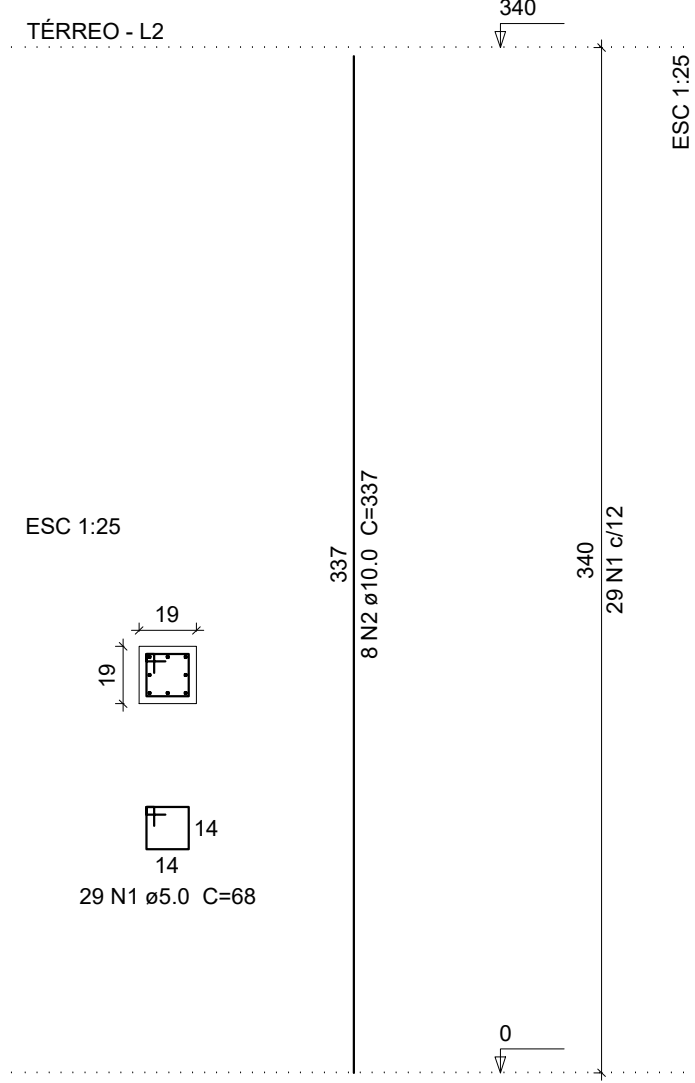


P1=P3=P9=P11=P13=P25=P35=P49=P61

P2=P6=P7=P8=P10=P12=P14=P15=P26=P27=P31P4=P5  
 =P32=P33=P34=P36=P37=P38=P40=P41=P42  
 =P43=P44=P45=P48=P50=P51=P52=P53=P54  
 =P55=P56=P57=P58=P59=P60

P16=P17=P18=P19=P20=P23=P24=P28=P29=P30P21  
 =P39=P46=P47

P22



ELEMENTO	AÇO	N	DIAM (mm)	QUANT (Barra)	UNIT (cm)	C.TOTAL (cm)
9xP1	CA60	1	5.0	261	68	17748
	CA50	2	10.0	72	337	24264
35xP2	CA60	1	5.0	1015	68	69020
	CA50	2	10.0	140	337	47180
2xP4	CA60	1	5.0	58	68	3944
	CA50	2	10.0	8	378	3024
13xP16	CA60	1	5.0	377	76	28652
	CA50	2	10.0	52	337	17524
P21	CA60	1	5.0	29	76	2204
	CA50	2	10.0	4	378	1512
P22	CA60	1	5.0	29	76	2204
	CA50	2	10.0	29	24	696
V201	CA50	3	10.0	6	378	2268
	CA60	1	5.0	39	122	4758
	CA50	2	6.3	1	113	113
	CA50	3	10.0	2	348	696
	CA50	4	16.0	2	669	1338
	CA50	5	16.0	1	576	576
	CA50	6	16.0	2	1023	2046
V203	CA60	1	5.0	10	78	780
	CA50	2	8.0	2	150	300
	CA50	3	8.0	2	184	368
V204	CA60	1	5.0	11	78	858
	CA50	2	8.0	2	190	380
	CA50	3	8.0	2	208	416
V205	CA60	1	5.0	10	78	780
	CA50	2	8.0	2	165	330
	CA50	3	8.0	2	183	366
V206	CA60	1	5.0	18	78	1404
	CA50	2	8.0	2	257	514
	CA50	3	8.0	2	266	532
V207	CA60	1	5.0	18	78	1404
	CA50	2	8.0	2	257	514
	CA50	3	8.0	2	283	566
V210	CA60	1	5.0	13	78	1014
	CA50	2	8.0	2	194	388
	CA50	3	8.0	2	228	456
V212	CA60	1	5.0	50	78	3900
	CA60	2	5.0	26	122	3172
	CA50	3	8.0	2	221	442
	CA50	4	10.0	2	508	1016
	CA50	5	10.0	3	450	1350
	CA50	6	10.0	2	1198	2396
	CA50	7	10.0	2	341	682
	CA50	8	12.5	2	711	1422
V213	CA60	1	5.0	36	78	2808
	CA50	2	10.0	2	583	1166
	CA50	3	12.5	2	514	1028
V214	CA60	1	5.0	35	78	2730
	CA50	2	8.0	2	514	1028
	CA50	3	8.0	2	548	1096
V215	CA60	1	5.0	48	78	3744
	CA50	2	8.0	2	184	368
	CA50	3	8.0	2	188	376
V216	CA60	4	10.0	2	409	818
	CA50	5	12.5	2	726	1452
	CA60	1	5.0	21	78	1638
	CA50	2	8.0	2	302	604
	CA50	3	8.0	2	334	668
V217	CA60	1	5.0	36	78	2808
	CA50	2	8.0	2	532	1064
	CA50	3	8.0	2	549	1098
V218	CA60	1	5.0	34	78	2652
	CA50	2	8.0	2	532	1064
	CA50	3	8.0	2	558	1116

AÇO	DIAM (mm)	C.TOTAL (m)	PESO (kg)
CA50	6.3	1.2	0.3
	8.0	140.6	55.5
	10.0	1039	640.6
	12.5	39.1	37.6
	16.0	39.6	62.5
CA60	5.0	1589.2	244.9
<b>PESO TOTAL (kg)</b>			
CA50		796.4	
CA60		244.9	

Volume de concreto (C-25) = 11.03 m³  
 Área de forma = 216.94 m²

Projeto Estrutural		Título	05/08	Folha
UNESPAR - Universidades Estadual do Paraná				
Proprietário				
Detalhes esquemáticos: Pilares e Vigas Respaldo				
Conteúdo				
Rua Hermínio Millis, S/N				
Localização				
Lote	Quadra	Bairro	Município	
2175	01	São Cristóvão	União da Vitória - PR	
Proprietário				
UNESPAR - Universidades Estadual do Paraná CNPJ: 05.012.896/0001-42				
Responsável técnico				
Engenheiro civil João Artur Casado CREA-PR 95.017/D				
Casa do projeto				
Indicada	Escala	Data	(44) 3423 4727 / 9 9965 5692	
		Novembro/2019	casadoprojeto@hotmail.com	