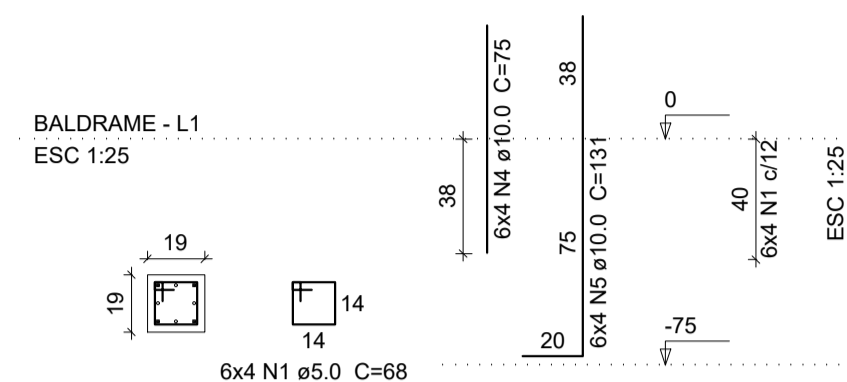
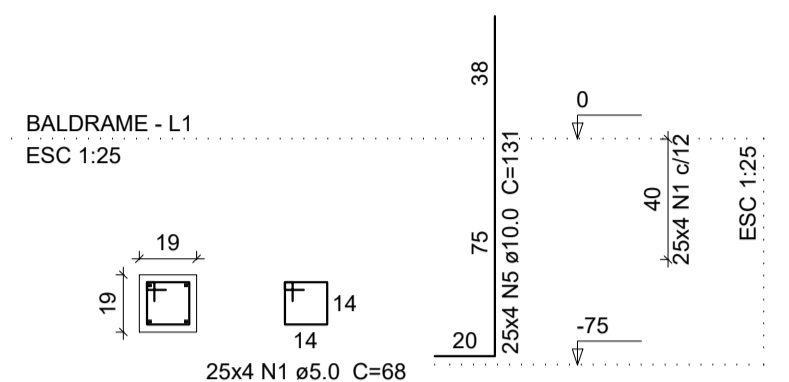


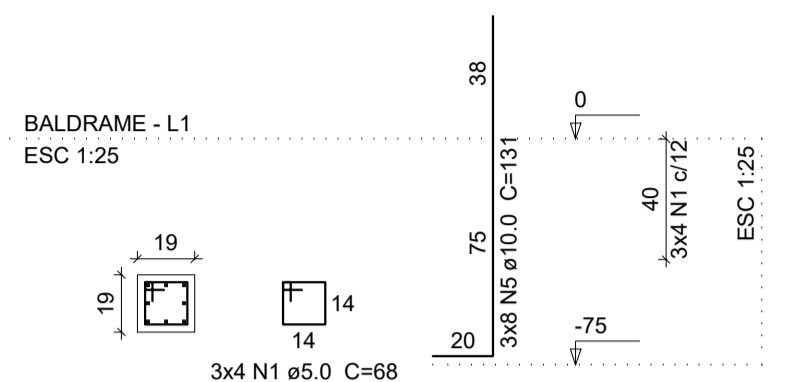
P9=P11=P13=P25=P35=P49



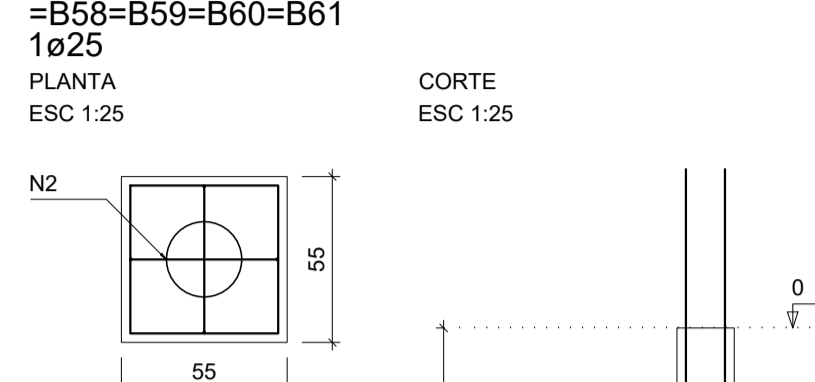
P4=P5=P6=P7=P8=P10=P12=P14=P15=P31=P36
=P38=P45=P48=P50=P51=P52=P53=P54=P55
=P56=P57=P58=P59=P60



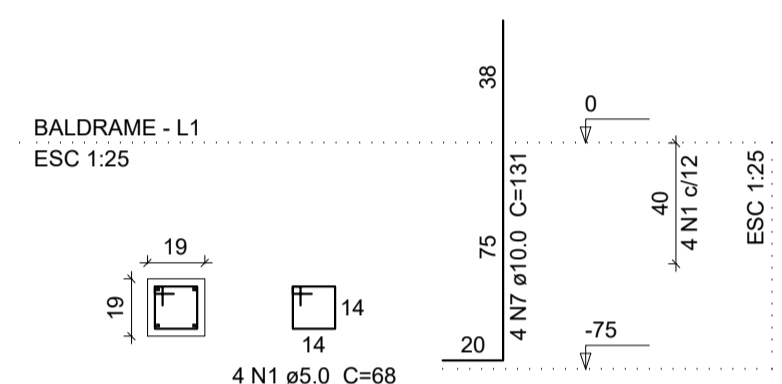
P1=P3=P61



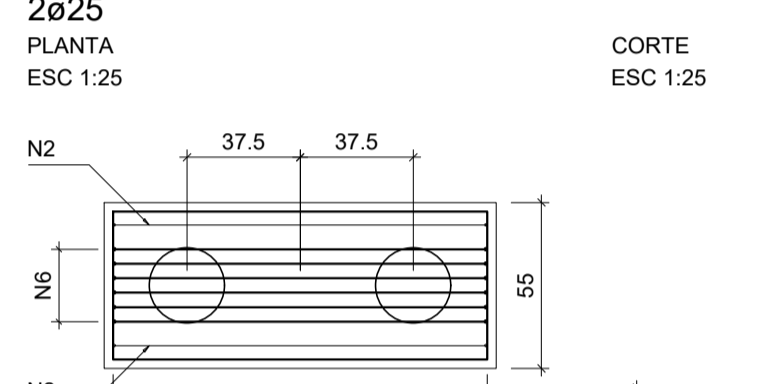
B1=B3=B4=B5=B6=B7=B8=B9=B10=B11=B12=B13
=B14=B15=B25=B31=B35=B36=B38=B45=B48
=B49=B50=B51=B52=B53=B54=B55=B56=B57
=B58=B59=B60=B61



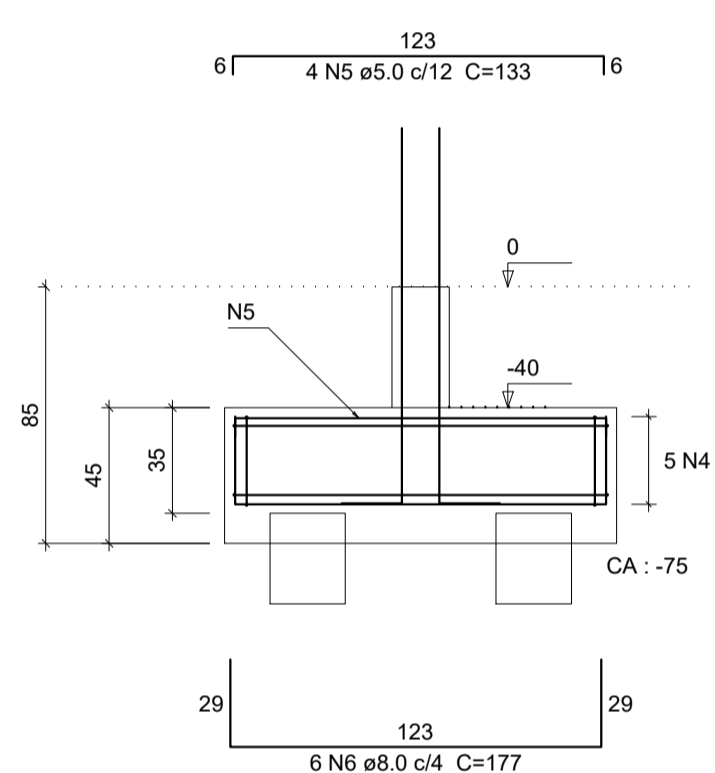
P2=P26=P27=P32=P33=P34=P37=P40=P41=P42
=P43=P44



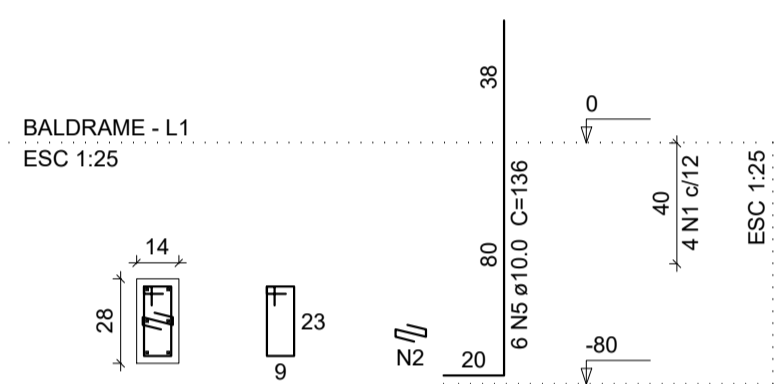
B2=B26=B27=B32=B33=B34=B37=B40=B41=B42
=B43=B44



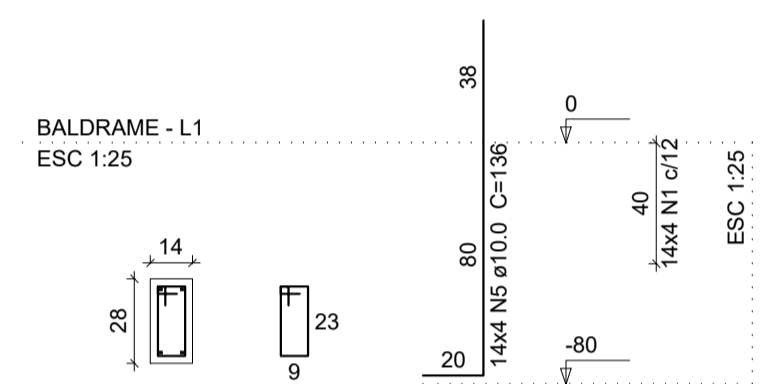
CORTE
ESC 1:25



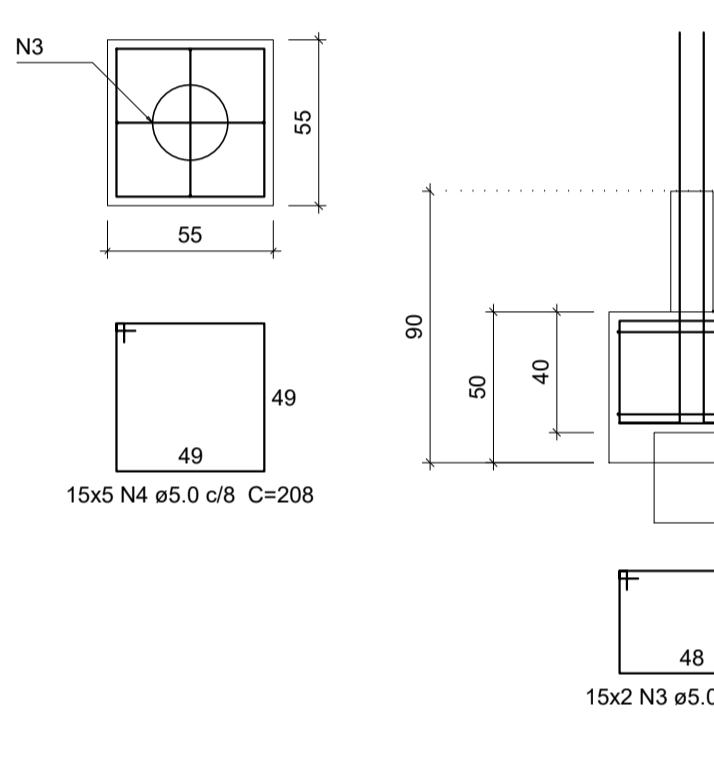
P22



P16=P17=P18=P19=P20=P21=P23=P24=P28=P29
B16=B17=B18=B19=B20=B21=B22=B23=B24=B28
=B29=B30=B39=B46=B47



CORTE
ESC 1:25



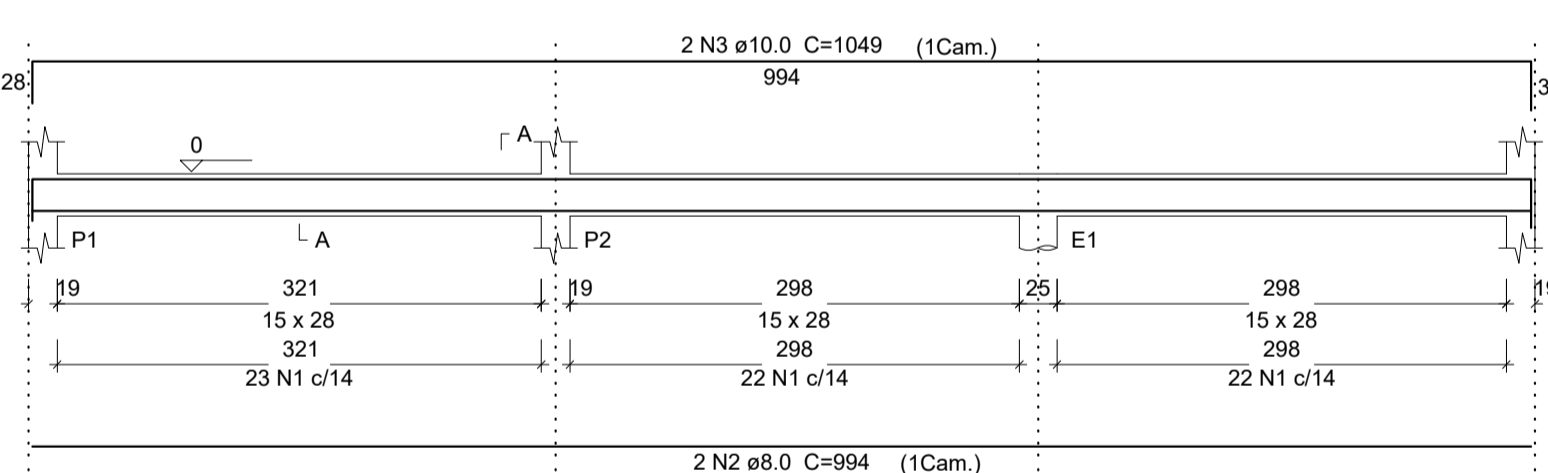
Relação do aço						
ELEMENTO	AÇO	N	DIAM (mm)	QUANT (Barras)	UNIT (cm)	C.TOTAL (cm)
12xB34	CA60	1	5.0	48	68	3264
	CA60	2	5.0	24	179	4296
	CA60	3	5.0	72	166	11952
	CA60	4	5.0	60	358	21480
	CA60	5	5.0	48	133	6394
	CA50	6	8.0	72	177	12744
B47	CA50	7	10.0	48	131	6288
	CA60	1	5.0	60	76	4560
	CA60	2	5.0	4	24	96
	CA60	3	5.0	30	176	5280
	CA60	4	5.0	75	208	10400
	CA50	5	10.0	62	136	8432
B61	CA60	1	5.0	136	68	9248
	CA60	2	5.0	68	166	11288
	CA60	3	5.0	170	208	35360
	CA50	4	10.0	24	75	1800
	CA50	5	10.0	148	131	19388
	CA60	1	5.0	67	78	5226
V101	CA50	2	8.0	2	994	1988
	CA50	3	10.0	2	1049	2098
	CA60	1	5.0	10	78	780
	CA50	2	8.0	2	150	300
	CA50	3	8.0	2	171	342
	CA60	1	5.0	11	78	858
V103	CA50	2	8.0	2	174	348
	CA50	3	8.0	2	208	416
	CA60	1	5.0	10	78	780
	CA50	2	8.0	2	157	314
	CA50	3	8.0	2	183	366
	CA60	1	5.0	18	78	1404
V104	CA50	2	8.0	2	249	498
	CA50	3	8.0	2	266	532
	CA60	1	5.0	18	78	1404
	CA50	2	8.0	2	266	532
	CA50	3	8.0	2	150	300
	CA60	1	5.0	9	78	702
V105	CA50	2	8.0	2	154	308
	CA50	3	8.0	2	170	340
	CA60	1	5.0	13	78	1014
	CA50	2	8.0	2	194	388
	CA50	3	8.0	2	228	456
	CA60	1	5.0	97	78	7566
V106	CA50	2	8.0	2	1070	2140
	CA50	3	8.0	2	350	700
	CA50	4	8.0	1	827	827
	CA50	5	8.0	1	830	830
	CA50	6	8.0	2	1198	2396
	CA50	7	8.0	2	338	676
V107	CA60	1	5.0	35	78	2730
	CA50	2	8.0	2	514	1028
	CA50	3	8.0	2	560	1120
	CA60	1	5.0	35	78	2730
	CA50	2	8.0	2	514	1028
	CA50	3	8.0	2	530	1060
V108	CA60	1	5.0	48	78	3744
	CA50	2	8.0	2	712	1424
	CA50	3	10.0	2	704	1408
	CA60	1	5.0	21	78	1638
	CA50	2	8.0	2	302	604
	CA50	3	8.0	2	320	640

Resumo do aço

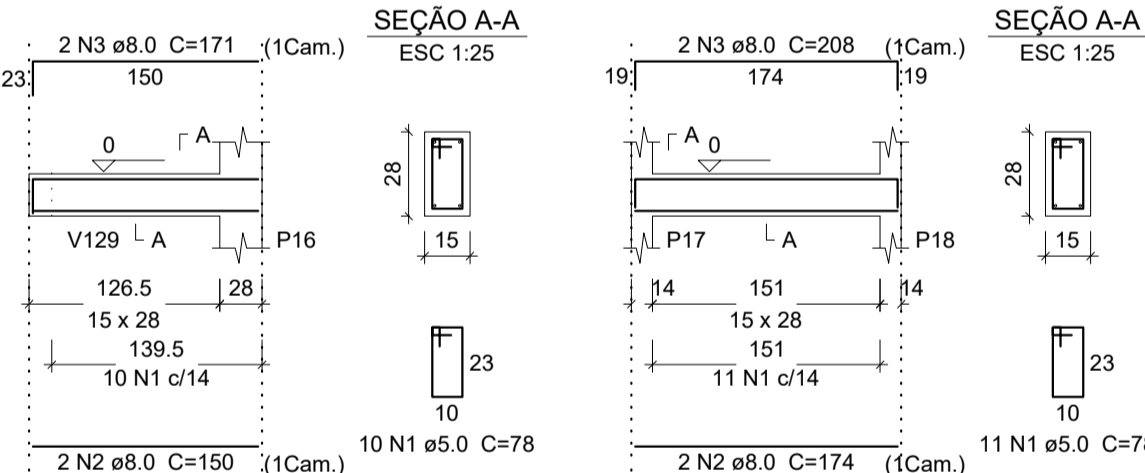
AÇO	DIAM (mm)	C.TOTAL (m)	PESO (kg)
CA50	8.0	355.2	140.1
CA50	10.0	394.2	243
CA60	5.0	1600.9	246.7
PESO TOTAL (kg)			
CA50		383.1	
CA60		246.7	

Volume de concreto (C-25) = 14.63 m³
Área de forma = 148.91 m²

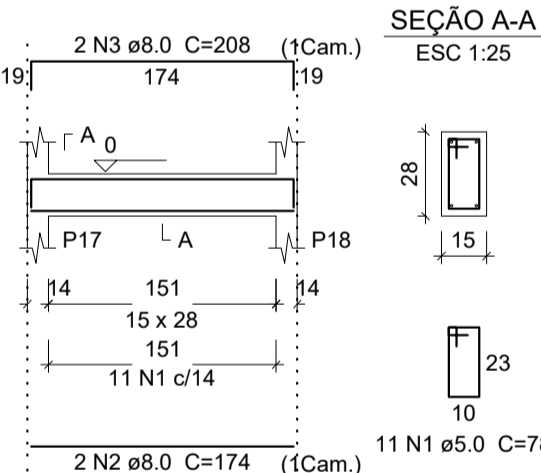
V101
ESC 1:50



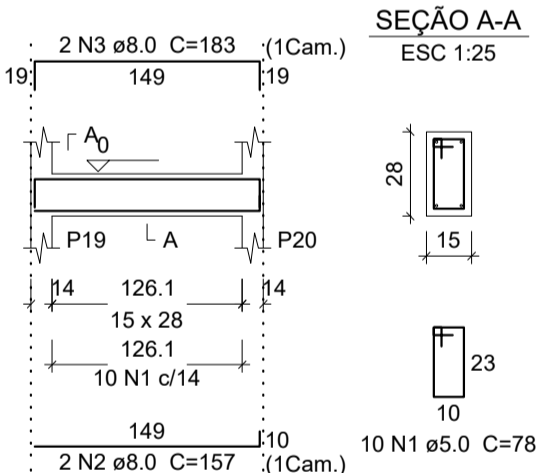
V103
ESC 1:50



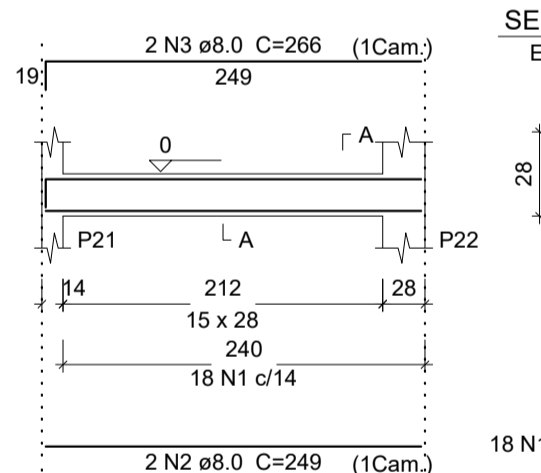
V104
ESC 1:50



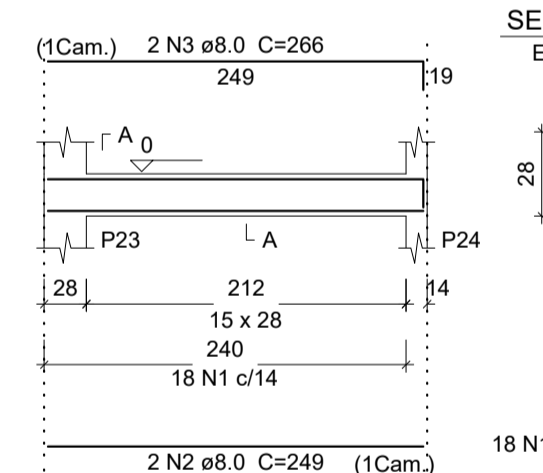
V105
ESC 1:50



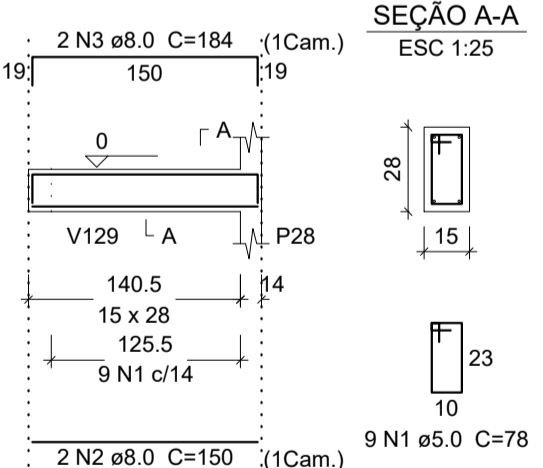
V106
ESC 1:50



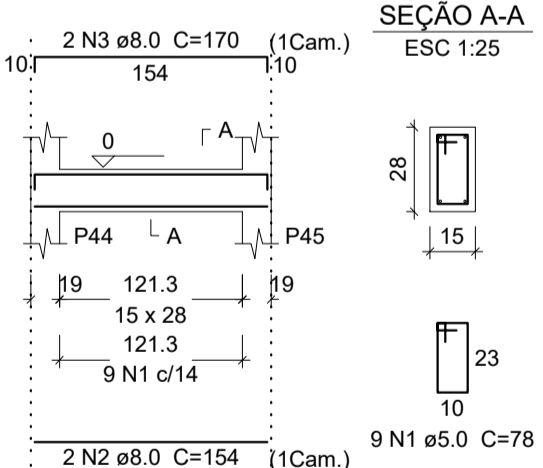
V107
ESC 1:50



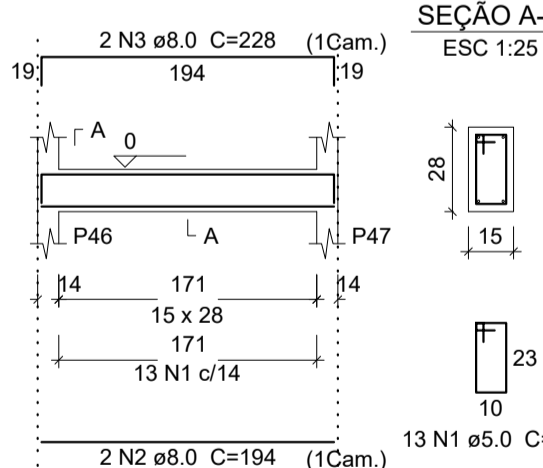
V108
ESC 1:50



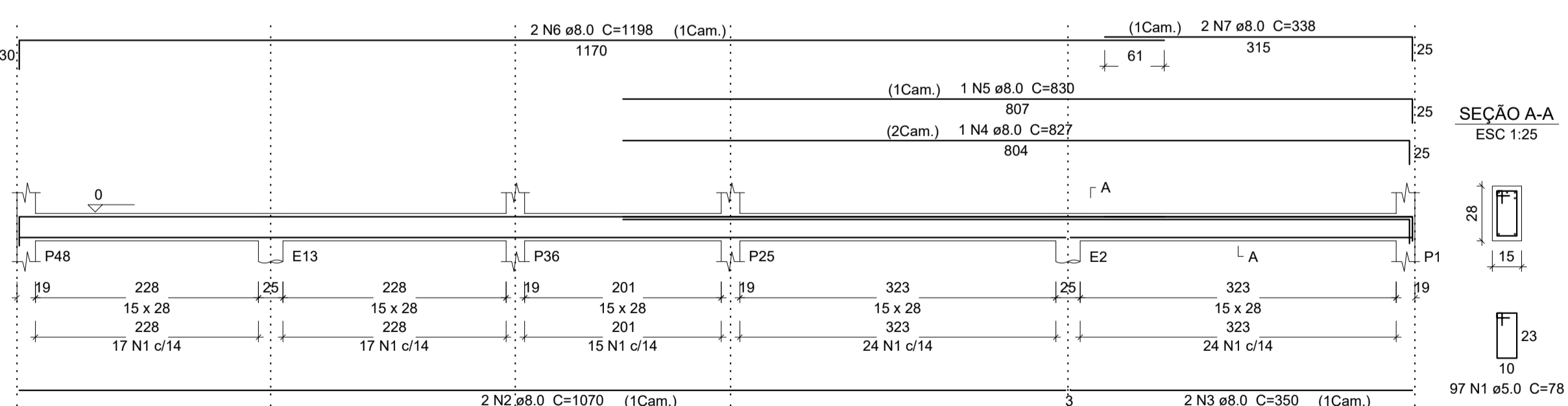
V111
ESC 1:50



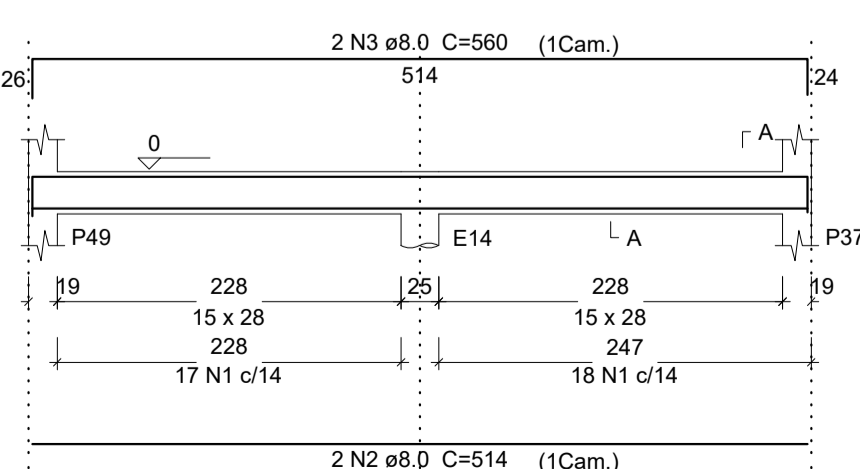
V112
ESC 1:50



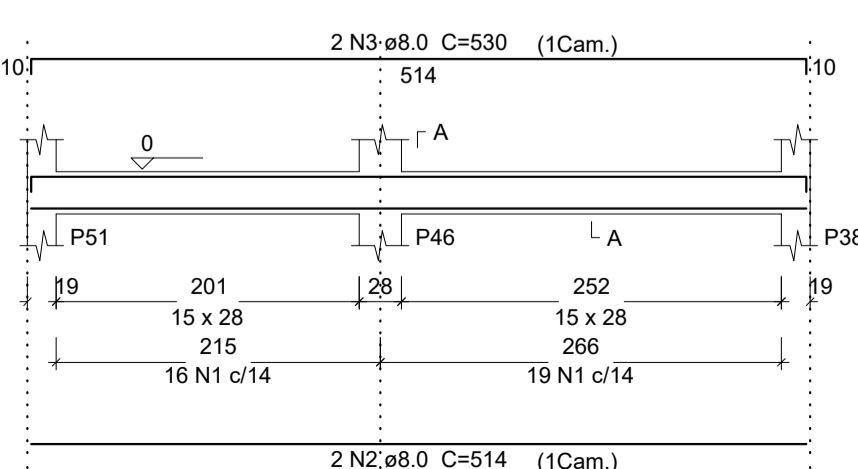
V114
ESC 1:50



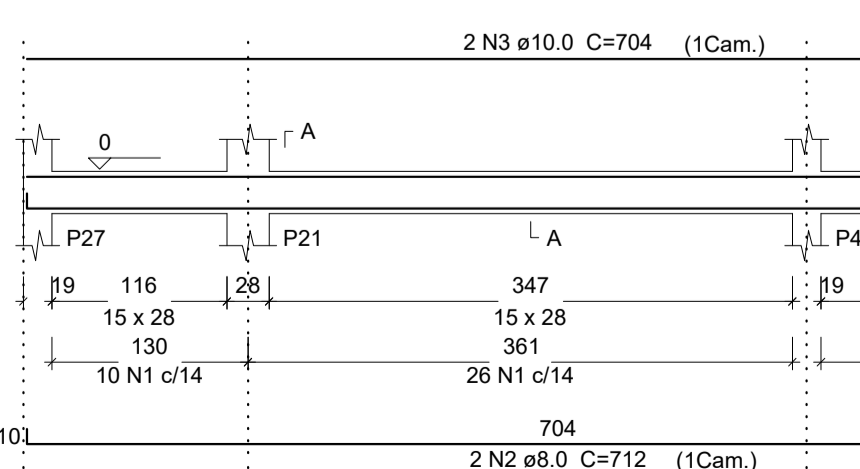
V115
ESC 1:50



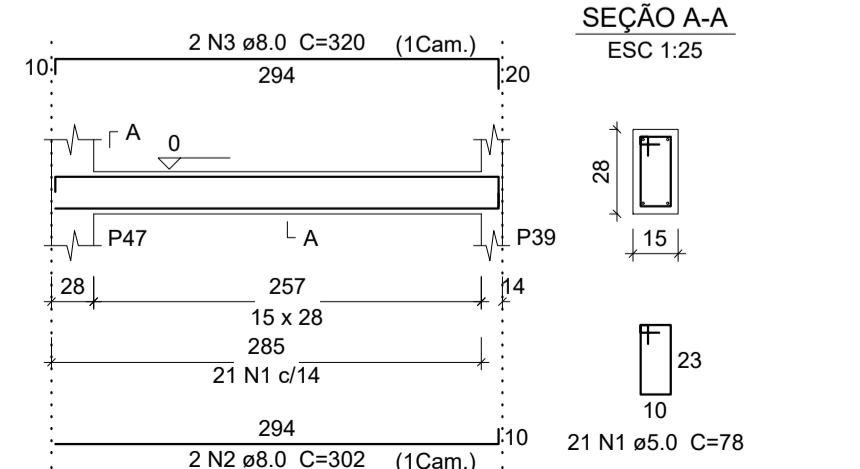
V116
ESC 1:50



V117
ESC 1:50



V118
ESC 1:50



Projeto Estrutural		Título	03/08	Folha
UNESPAR - Universidades Estadual do Paraná				
Proprietário				
Detalhes esquemáticos: Fundações, Pilares e Vigas Baldrame				
Conteúdo				
Rua Hermínio Millis, S/N				
Localização				
Lote	Quadra	Bairro	Município	
2175	01	São Cristóvão	União da Vitória - PR	
Proprietário				
UNESPAR - Universidades Estadual do Paraná				
CNPJ: 05.012.896/0001-42				
Responsável técnico				
Engenheiro civil João Artur Casado				
CREA-PR 95.017/D				
Casa do projeto				
Escala	Data	(44) 3423 4727 / 9 9965 5692		
Indicada	Novembro/2019	casadoprojeto@hotmail.com		