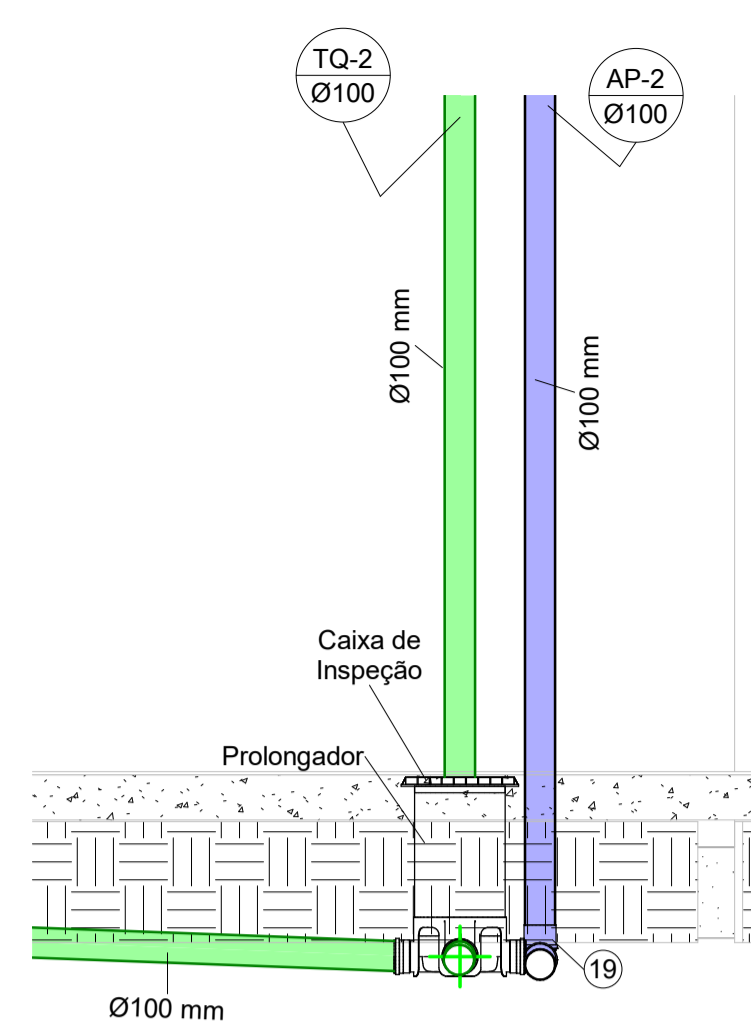
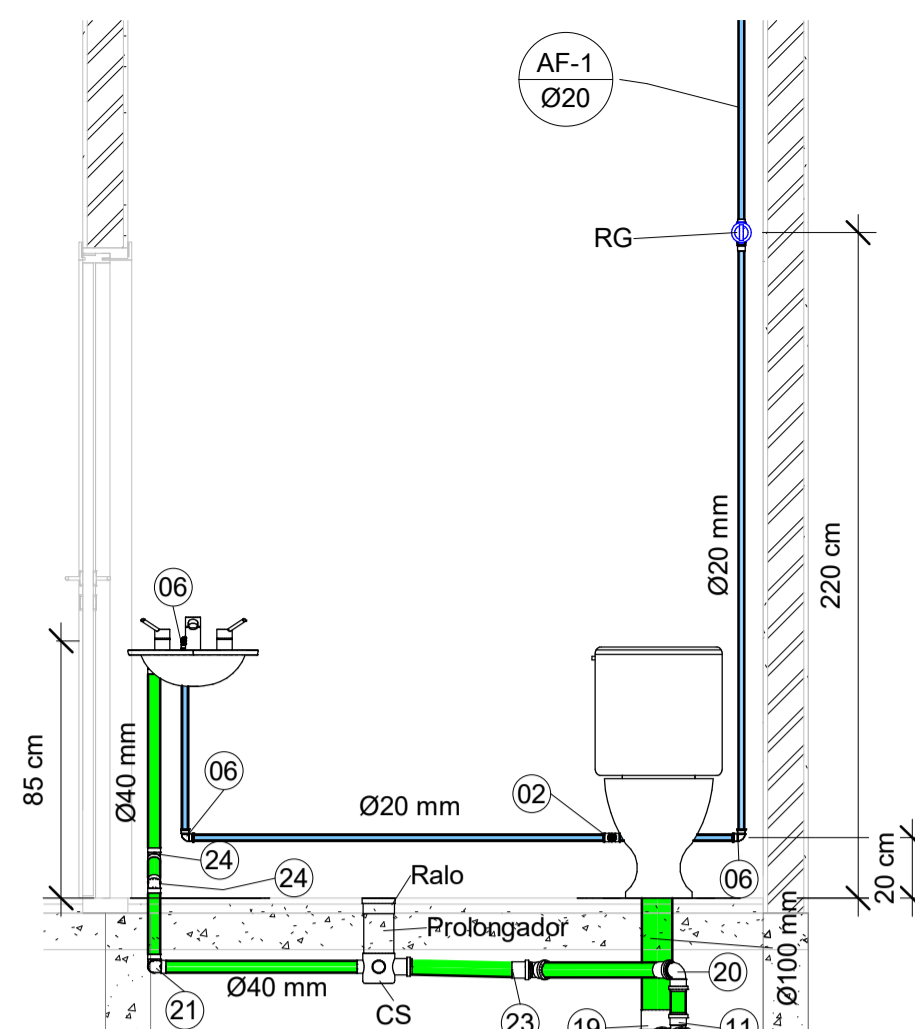


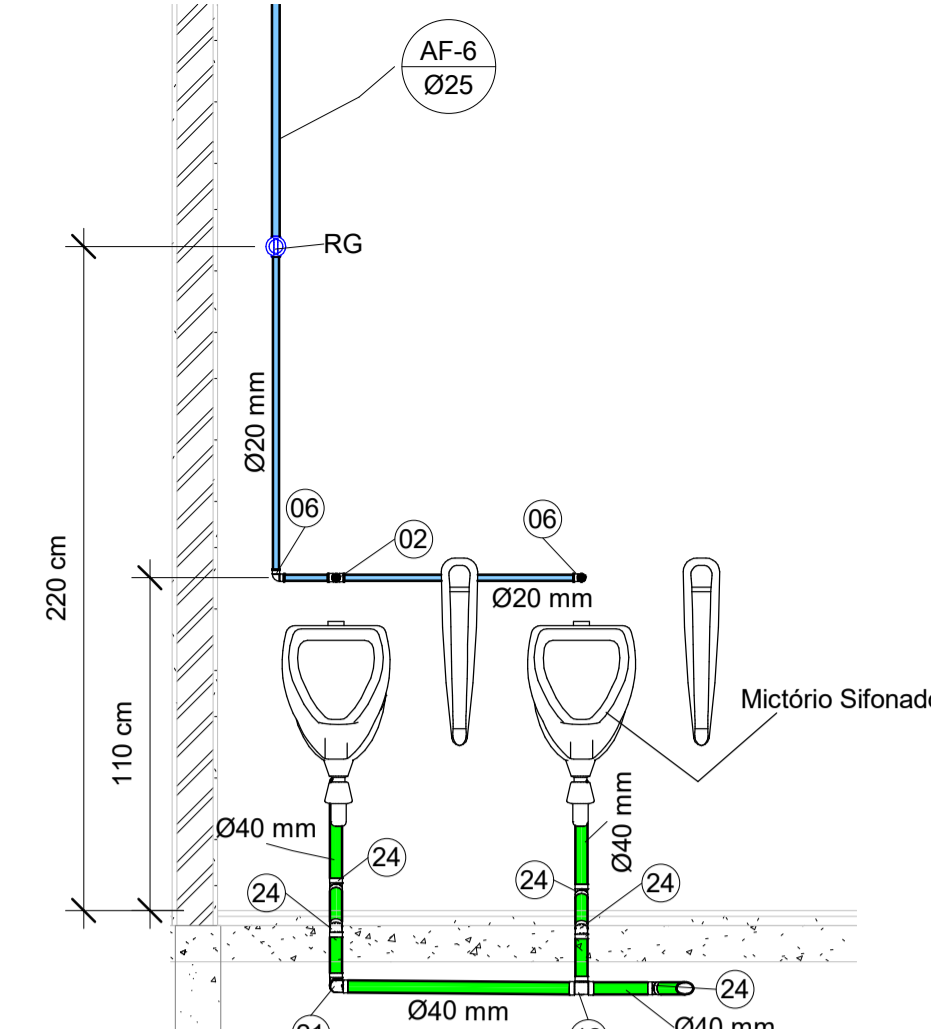
1 Corte 01- Têrreo 1
1 : 25



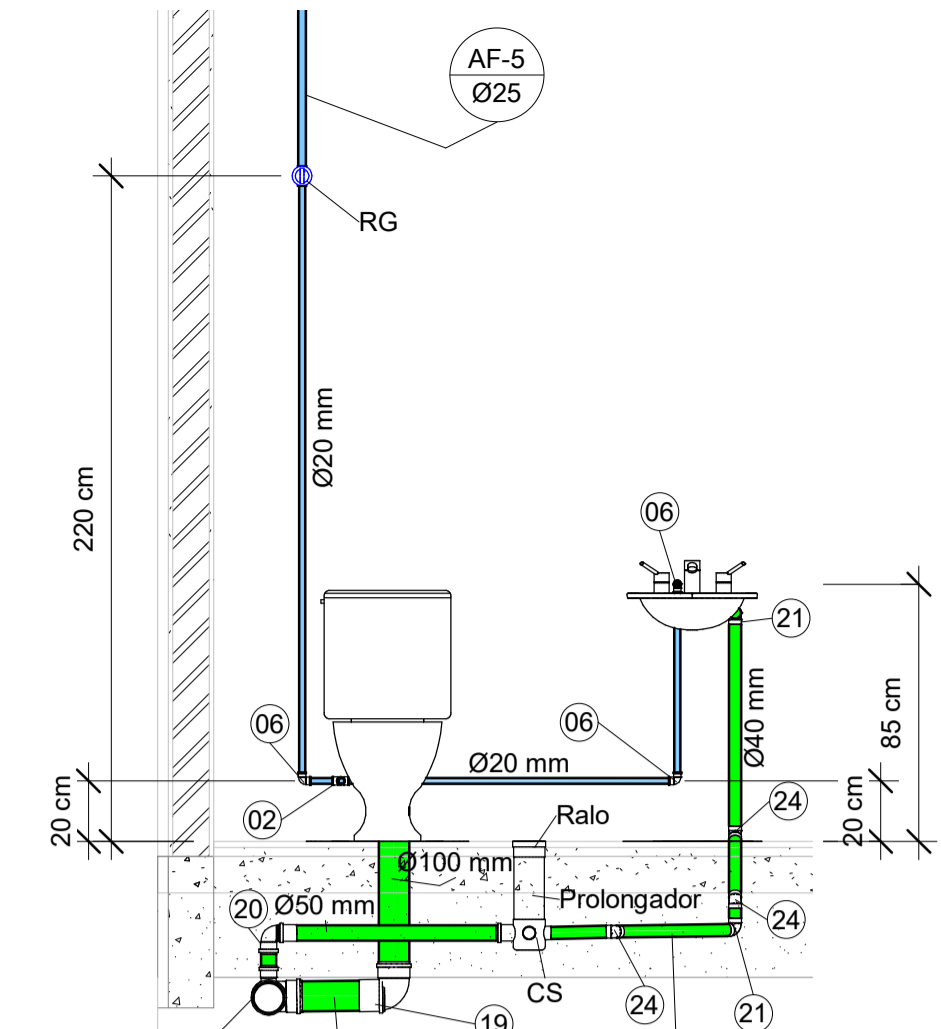
2 Corte 02- Têrreo 2
1 : 25



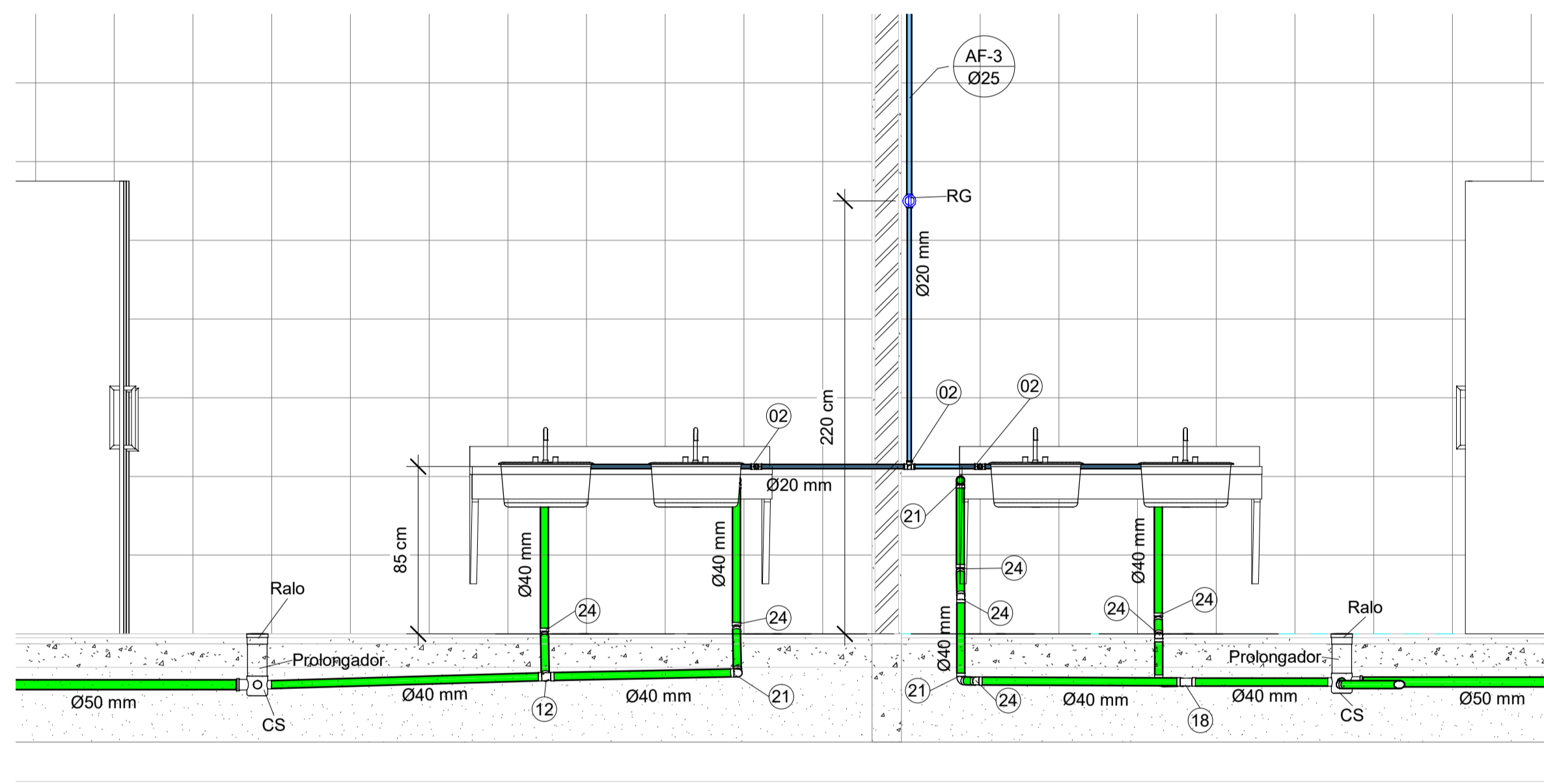
4 Corte 04 - WC Acessível- Água Fria- Esgoto
1 : 25



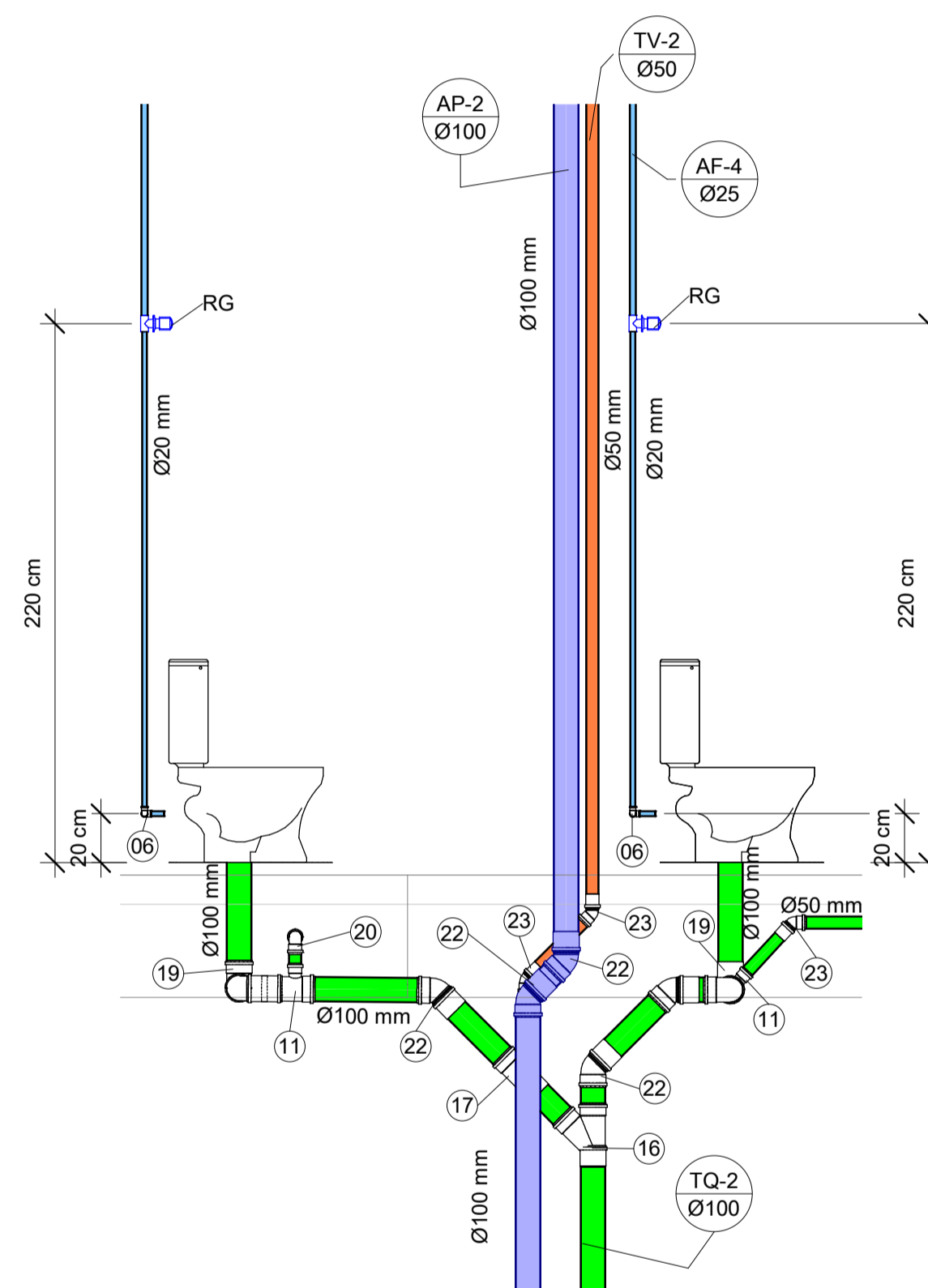
8 Corte 08- WC Masc - Mictórios
1 : 25



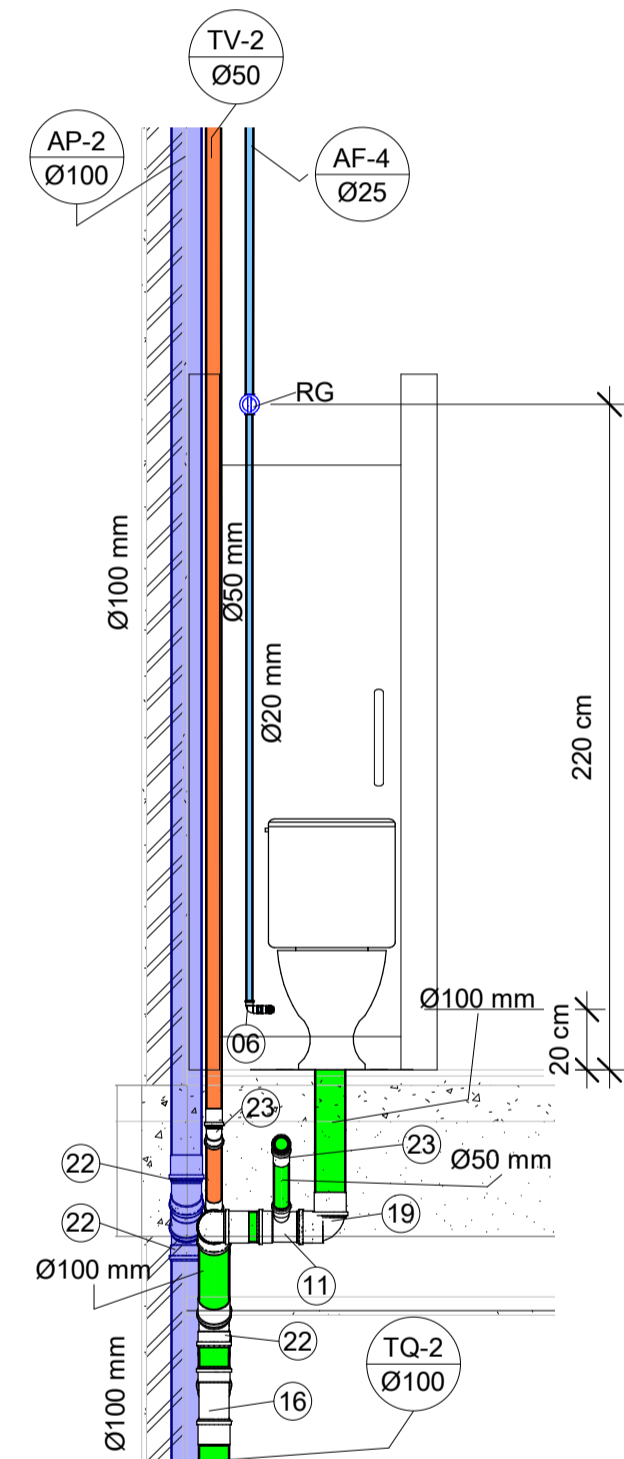
10 Corte 10- WC Func- Água Fria- Esgoto
1 : 25



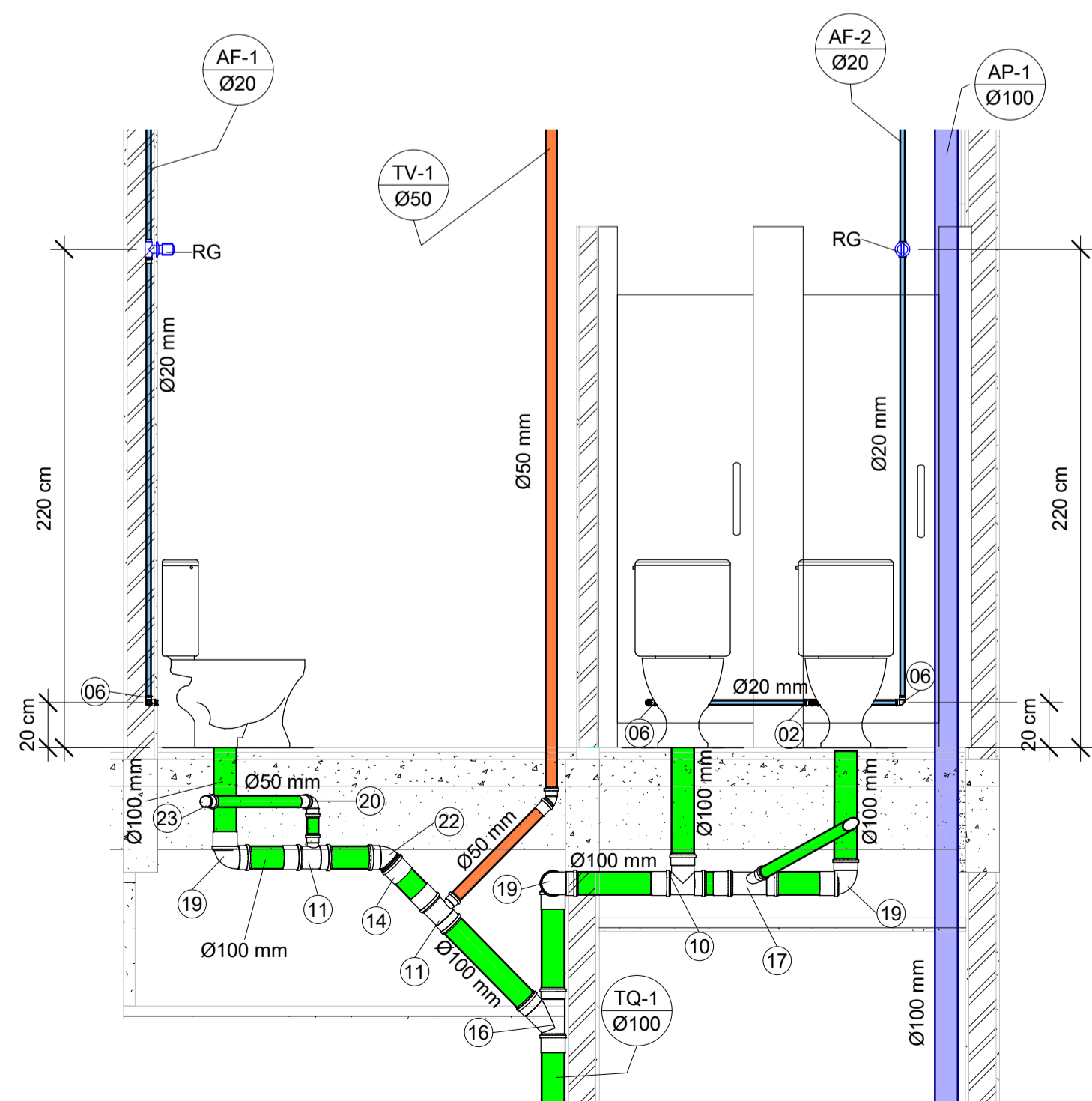
5 Corte 05 - WC Masc/Fem - Água Fria - Esgoto
1 : 25



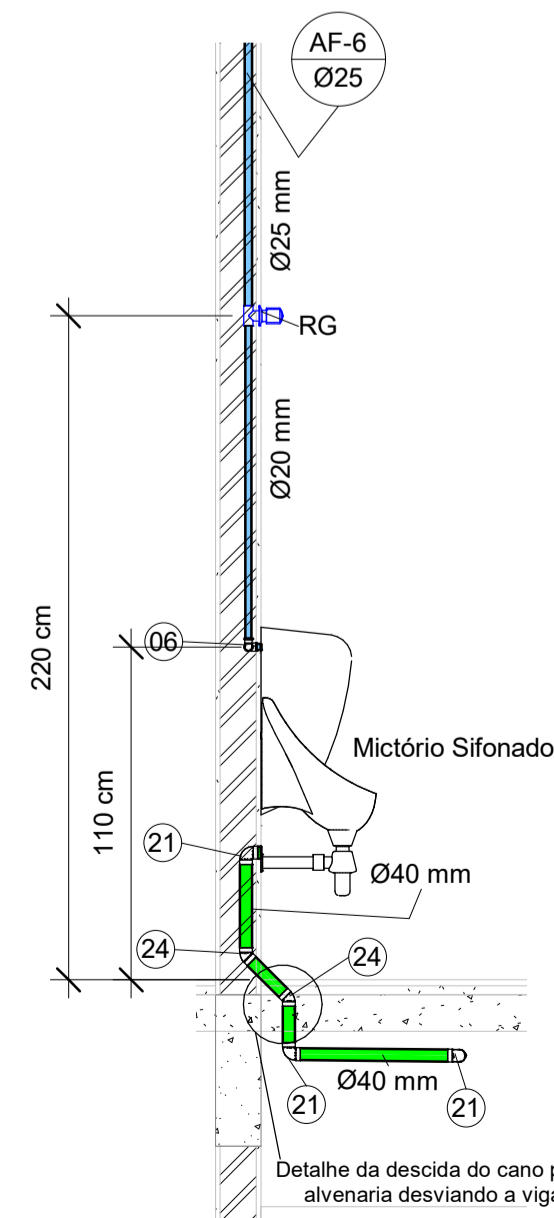
11 Corte 11- WC Func- Água Fria- Esgoto
1 : 25



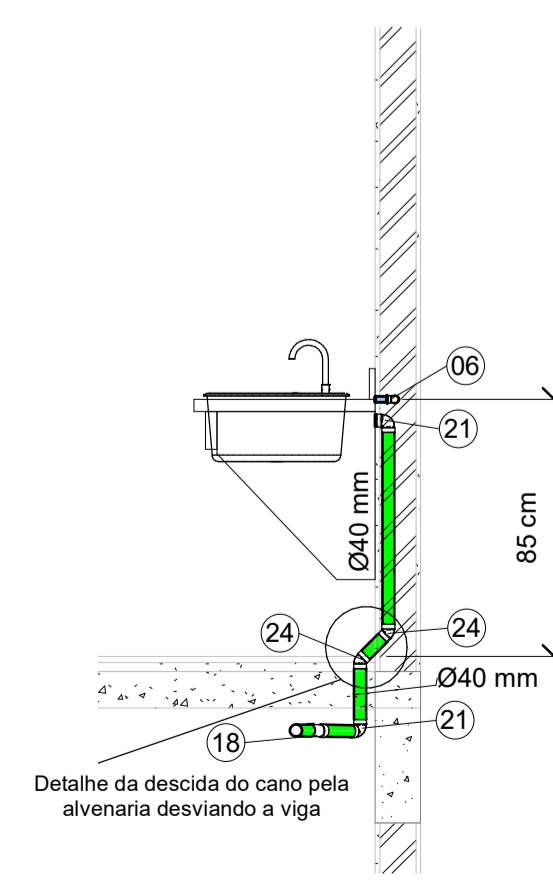
9 Corte 09- WC Masc- Água Fria- Esgoto
1 : 25




3 Corte 03 - WC Acessível/WC Fem- Água Fria - Esgoto
1 : 25



7 Corte 07- WC masc - água Fria- Esgoto
1 : 25



6 Corte 06- WC Masc- Água Fria - Esgoto
1 : 25

	OBRA: CONTINUAÇÃO DE OBRA PARALIZADA	Nº DA PRANCHA 03 / 06
	PROJETO: PROJETO HIDROSSANITÁRIO	
	CLIENTE: UNESPAR - CAMPUS UNIÃO DA VITÓRIA	ESCALA: 1 : 25
	ENDEREÇO: Praça Coronel Amazonas S/N	
	DATA: 15/10/2019	
DESENHISTA: ISRAEL F. BOSTELMANN/ WAGNER SERRER		
ENGENHEIRO CIVIL: ISRAEL F. BOSTELMANN		
CREA: PR-179184/D		